

# Hampden County, Massachusetts

## Summary Report: Felony and Misdemeanor Cases

### District Court



### Project Overview

The goal of the ECCM project is to discover, document, and disseminate effective criminal case management practices in state trial courts to help reduce delay and cost and improve the quality of justice. More than 90 courts are participating. Case-level information from the most recent 12-month period available was collected from each court for disposed felony and/or misdemeanor cases.

### Case Types

Cases were classified into a set of case types determined by the most serious charge at filing.

In order of severity, the case types are:

- Homicide (e.g., murder, manslaughter)
- Person offense (e.g., assault, robbery)
- Property offense (e.g., burglary, larceny)
- Drugs (e.g., manufacture, sale, use)
- Weapons (e.g., illegal possession)
- Driving While Intoxicated (e.g., DUI)
- Other motor vehicle (e.g., reckless driving)
- Legal process (e.g., bail, probation violation)
- Public order (e.g., disorderly conduct, vagrancy)
- Other felony/other misdemeanor

### Case Counting Rules

A case is defined as a single defendant and all charges arising from a single incident. The data set includes a single record for each case. For cases involving multiple charges against a single defendant, the data was condensed to produce a single record based on the most serious charge at filing and disposition.

### Active Time to Disposition

The recommended measure of case processing time excludes those time periods over the life of a case where the case is out of court control and no progress can be made (inactive time). For criminal cases this typically arises when a defendant fails to appear in court. When possible, we show active time to disposition, calculated by subtracting the inactive time from the total case processing time.

### Hampden Court Description

Population of County (2015): 470,690

Population Rank: 145th largest by population of the 3,142 U.S. counties

Type of Court & Data Available: Two-tier/LJ: misdemeanor data only

Judge Selection: Governorial appointment

### Measuring Case Processing Time using the National Model Time Standards

#### Felonies

90% within 180 days

98% within 365 days

#### Misdemeanors

90% within 90 days

98% within 180 days

Time standards set expectations for timely case processing and provide a benchmark for assessing court performance. The **National Model Time Standards** (NCSC, 2011) for felony and misdemeanor cases are used here to provide time goals for resolving 90% and 98% of cases. In addition, the *mean* (average) and *median* (midpoint) days to disposition give insight into the more typical time taken to resolve cases. The *overall mean* for all ECCM sites is also included for comparison. When the % of cases within 90/180/365 days are the same, only one value is shown.

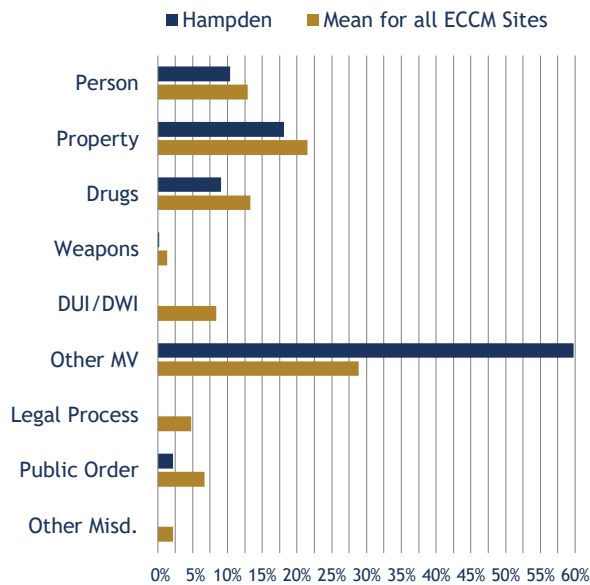
# Hampden County, Massachusetts

## District Court - Misdemeanor Cases

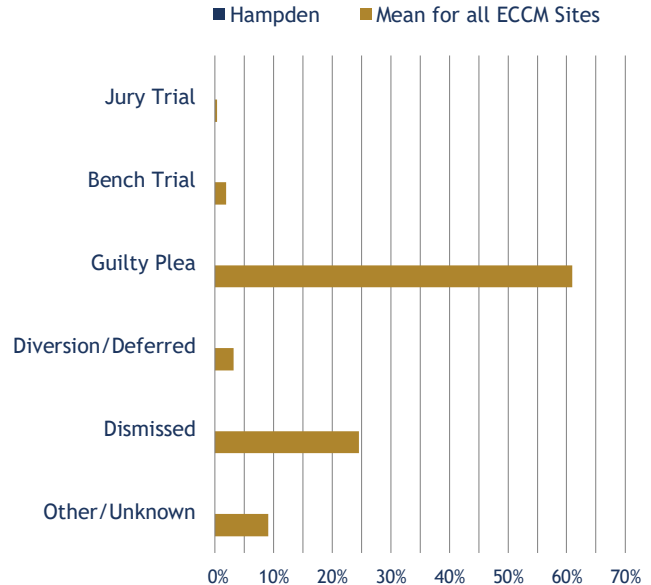


Total Misdemeanor Cases: 13,429

### Caseload Composition



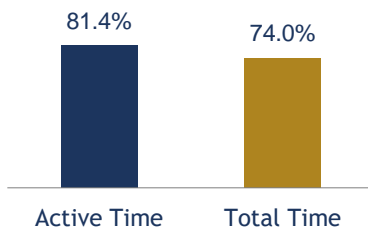
### Manner of Disposition



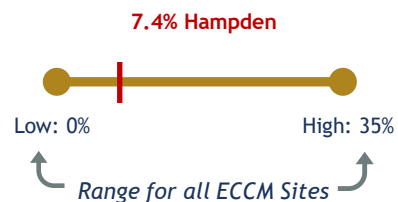
### Active Time from Filing to Disposition All ECCM Sites in Massachusetts

| County/Site                    | Total Cases   | % within 90 days | % within 180 days | Mean # of days | Median # of days |
|--------------------------------|---------------|------------------|-------------------|----------------|------------------|
| Bristol                        | 14,428        | 55%              | 75%               | 140            | 77               |
| Essex                          | 17,248        | 66%              | 84%               | 101            | 51               |
| Hampden                        | 13,429        | 51%              | 81%               | 119            | 86               |
| Middlesex                      | 21,873        | 59%              | 77%               | 133            | 70               |
| Norfolk                        | 10,169        | 56%              | 75%               | 139            | 70               |
| Worcester                      | 21,582        | 65%              | 84%               | 99             | 56               |
| <b>Mean for All ECCM Sites</b> | <b>12,186</b> | <b>52%</b>       | <b>75%</b>        | <b>158</b>     | <b>91</b>        |

### % Disposed within 180 Days Active Time vs. Total Time



### % Difference between Active and Total Time



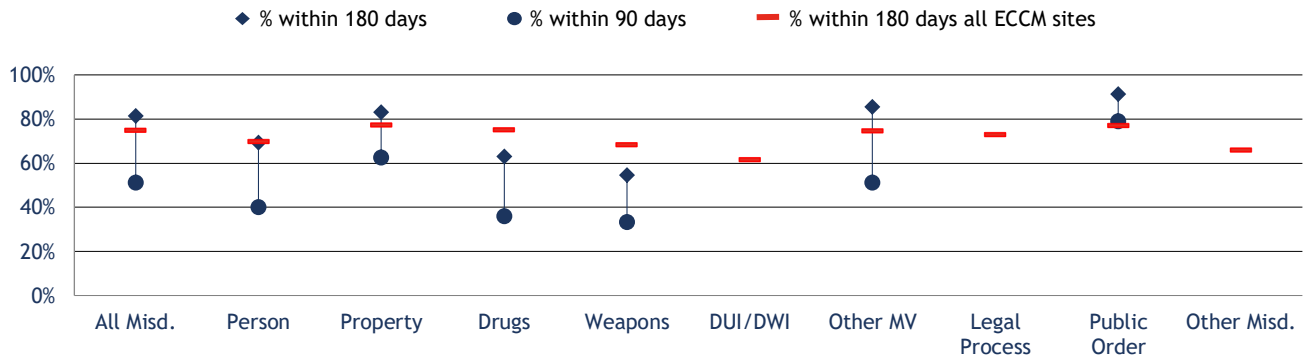
# Hampden County, Massachusetts

## District Court - Misdemeanor Cases

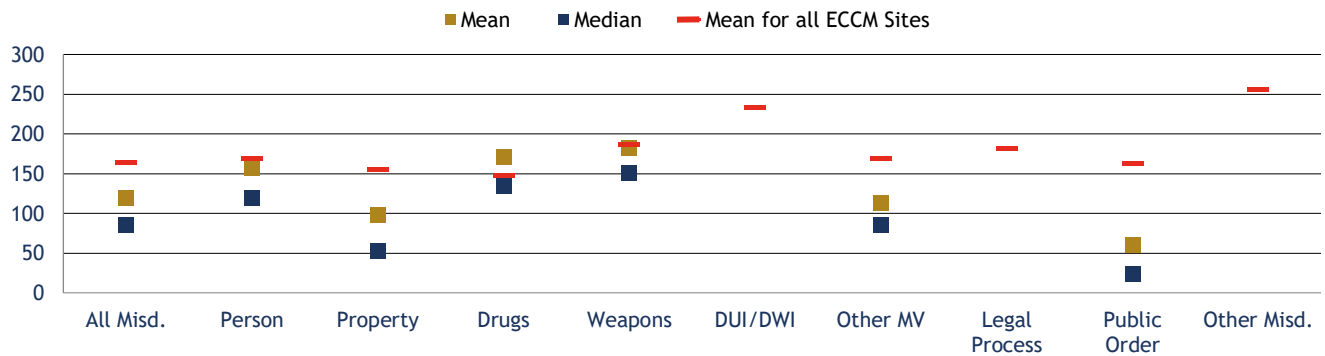


Total Misdemeanor Cases: 13,429

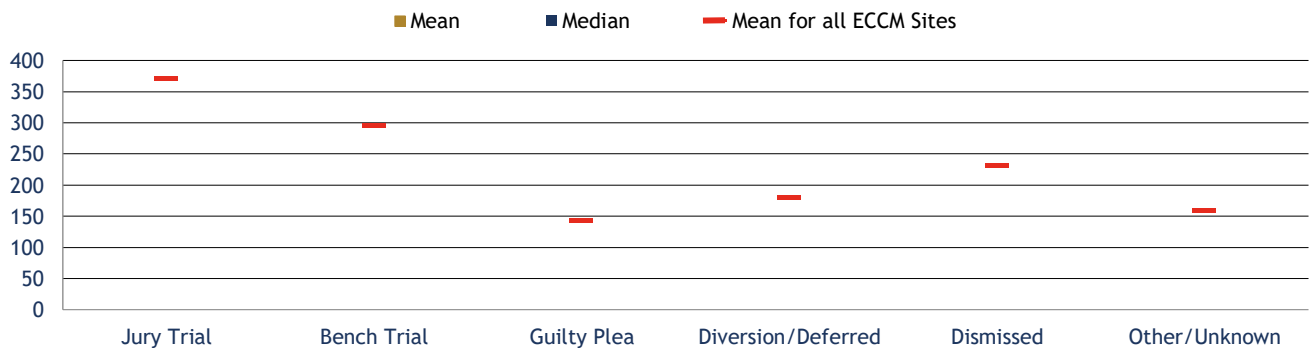
**% Disposed Within 90 and 180 Days by Case Type (Active Time)**



**Disposed Cases: Mean and Median Days by Case Type (Active Time)**



**Mean and Median Days by Manner of Disposition (Active Time)**

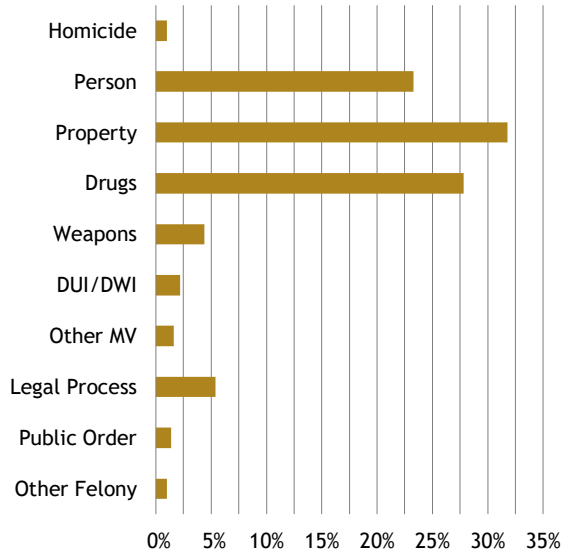


# Aggregate Findings for All ECCM Sites

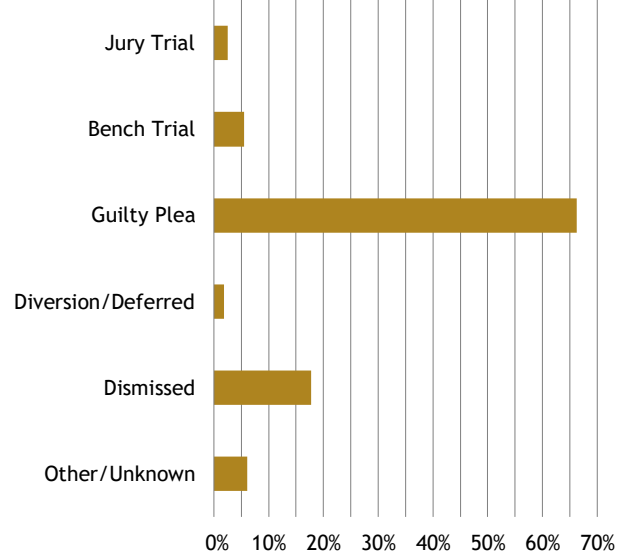
## Felony Caseloads



Caseload Composition



Manner of Disposition



Active Time from Filing to Disposition

| County/Site    | Average # of Cases per Site | % within 180 days | % within 365 days | Mean # of days | Median # of days |
|----------------|-----------------------------|-------------------|-------------------|----------------|------------------|
| All ECCM Sites | 3,676                       | 63%               | 86%               | 213            | 135              |

Percentage of Felony Cases Resolved Within:

| Case Type     | 180 Days | 365 Days |
|---------------|----------|----------|
| Homicide      | 26%      | 53%      |
| Person        | 55%      | 83%      |
| Property      | 65%      | 87%      |
| Drugs         | 63%      | 86%      |
| Weapons       | 63%      | 88%      |
| DUI/DWI       | 62%      | 85%      |
| Other MV      | 64%      | 87%      |
| Legal Process | 71%      | 91%      |
| Public Order  | 60%      | 87%      |
| Other Felony  | 56%      | 83%      |
| All Felonies  | 63%      | 86%      |

Number of Active Days from Filing to Disposition

| Manner of Disposition   | Mean Days | Median Days |
|-------------------------|-----------|-------------|
| Jury Trial              | 452       | 375         |
| Bench Trial             | 422       | 357         |
| Guilty Plea             | 202       | 143         |
| Diversion/Deferred Adj. | 250       | 204         |
| Dismissed               | 280       | 148         |