

# COURTS ENGAGING COMMUNITIES

**BUILDING TRUST AND INCREASING  
CONFIDENCE**

Juvenile Policy Boards  
New Jersey Office of the Attorney General

Assistant Attorney General Wanda Moore  
Deputy Attorney General Denise Hollingsworth

# OUR APPROACH MUST BE GUIDED BY SEVERAL COMMON PRINCIPLES, INCLUDING:

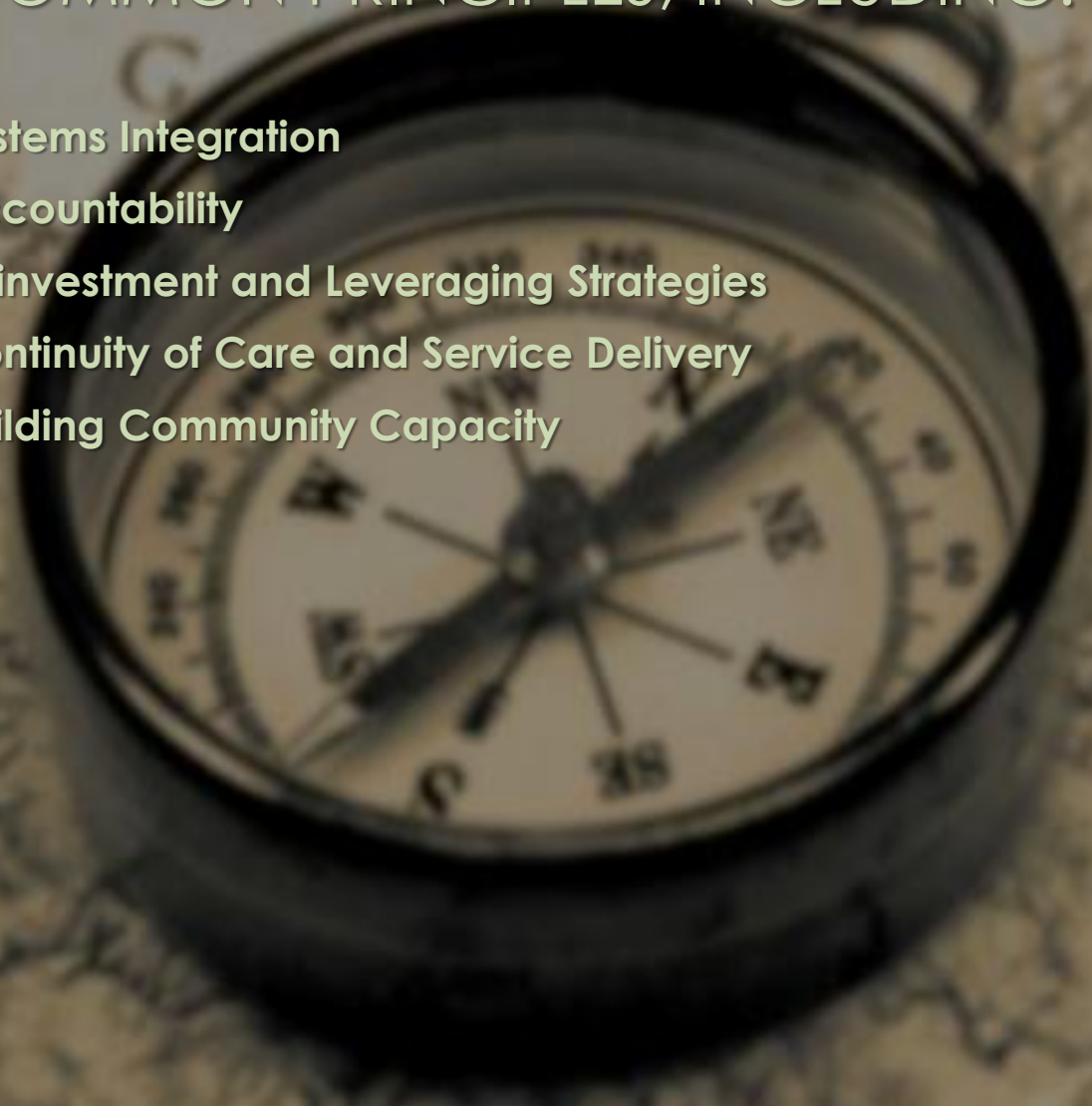
**Systems Integration**

**Accountability**

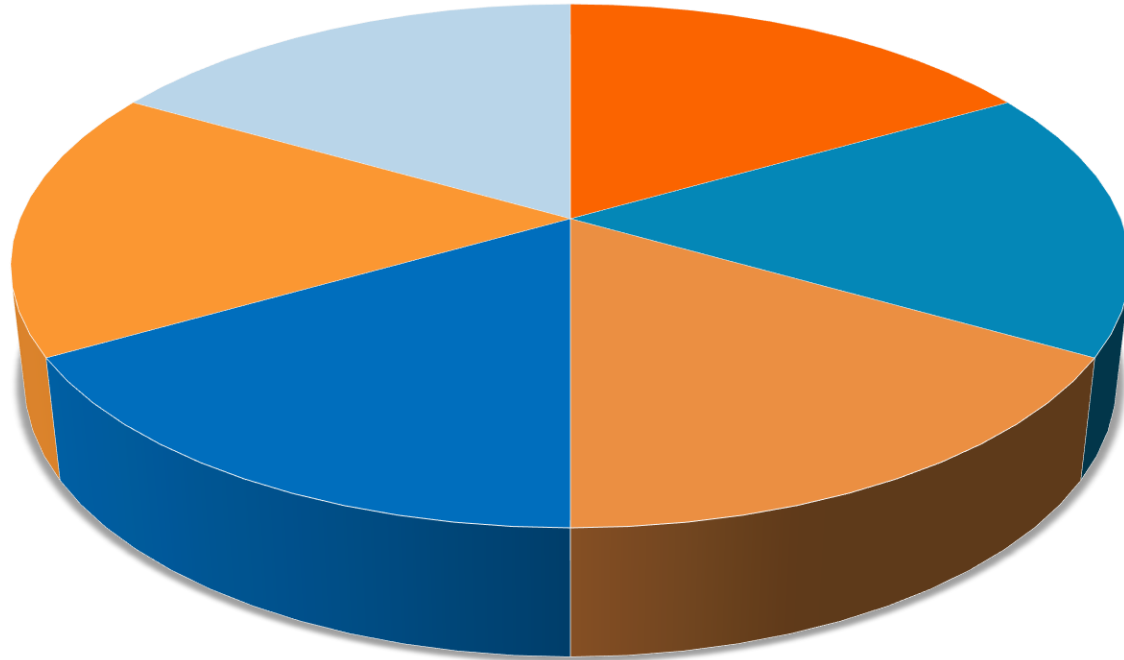
**Reinvestment and Leveraging Strategies**

**Continuity of Care and Service Delivery**

**Building Community Capacity**



# Protective Factors: Youth Need Every Slice of the Pie




- Low Violence Neighborhood
- Positive Parental Support
- School Connectedness (for young men)
- Higher parental expectations for school completion (for young women)

# YOUTH EARLY EXPOSURE TO VIOLENCE

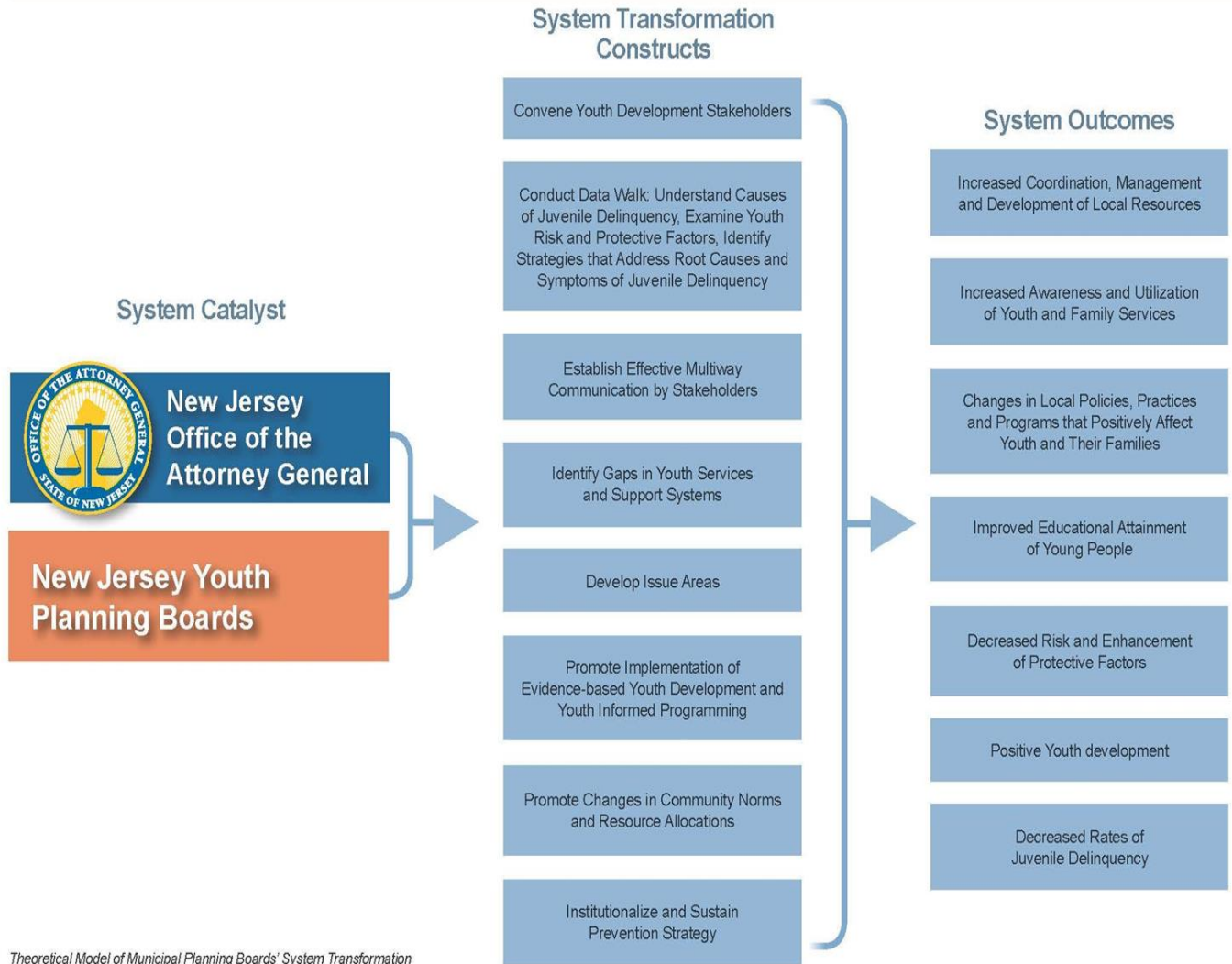
**Exposure to violence early in life may be the strongest predictor for later aggression, substance use and abuse, and participation in high risk behaviors.**



# FOUNDATIONAL POINTS

- Established with the support of the Office of the Attorney General in partnership with a State University
  - Part of a state-wide network of municipal youth planning boards
  - Research-based and data-driven
  - Fosters collaboration across organizations
- 

# Youth Planning Board Prevention System Construct



# MOVING THE PROCESS

- **Harness collective expertise to promote positive youth development**
- **Identify and map existing resources**
  - **identify gaps and strengths**
- **Develop data-informed policy recommendations**
  - § **analyze critical local data to provide accurate snapshot of young residents**
  - § **review best practices and successful strategies**
- **Help youth-focused organizations develop their own capacity**
- **Align with My Brother's Keeper goals**

# DEVELOPING AN EFFECTIVE PLAN OF ACTION

What are the next steps?

- Assess the Data!
- What are the existing resources? Can you fortify existing resources?
- Get that youth input...Engage the Youth in the process
- Determine where we need to modify existing policy? What does the Data take us?



Remember: It is all about the data!



COMMUNITY

Data

Data

DATA!

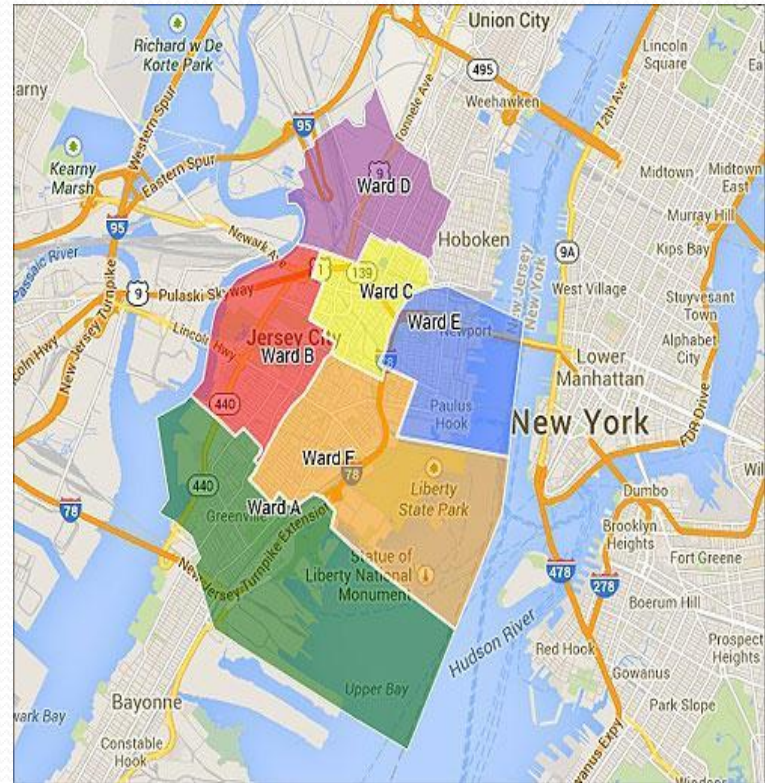
Data-driven results should  
be required to justify  
continued expenditures on  
programs and services

# Jersey City Demographics

**Densely populated, medium-sized city (pop > 254,000) in northern NJ within the metropolitan region of New York City.**

**Nearly 1 in 5 residents live in poverty, including 24% of children under 18 and 27% of youth ages 16-24.**

**More than 1 in 4 youth ages 16-24 are unemployed in Jersey City, and the high school dropout rate is 13%.**



## Reviewing Jersey City Data

| Indicator                                      | Percentage |
|--|------------|
| Census counts by age group                     |            |
| Ages 10-14 (12,373)                            | 5%         |
| Ages 15-19 (13,691)                            | 5%         |
| Ages 20-24 (19,151)                            | 8%         |
| Families with children (<18) living in poverty |            |
| In Jersey City                                 | 24%        |
| Statewide NJ                                   | 13%        |

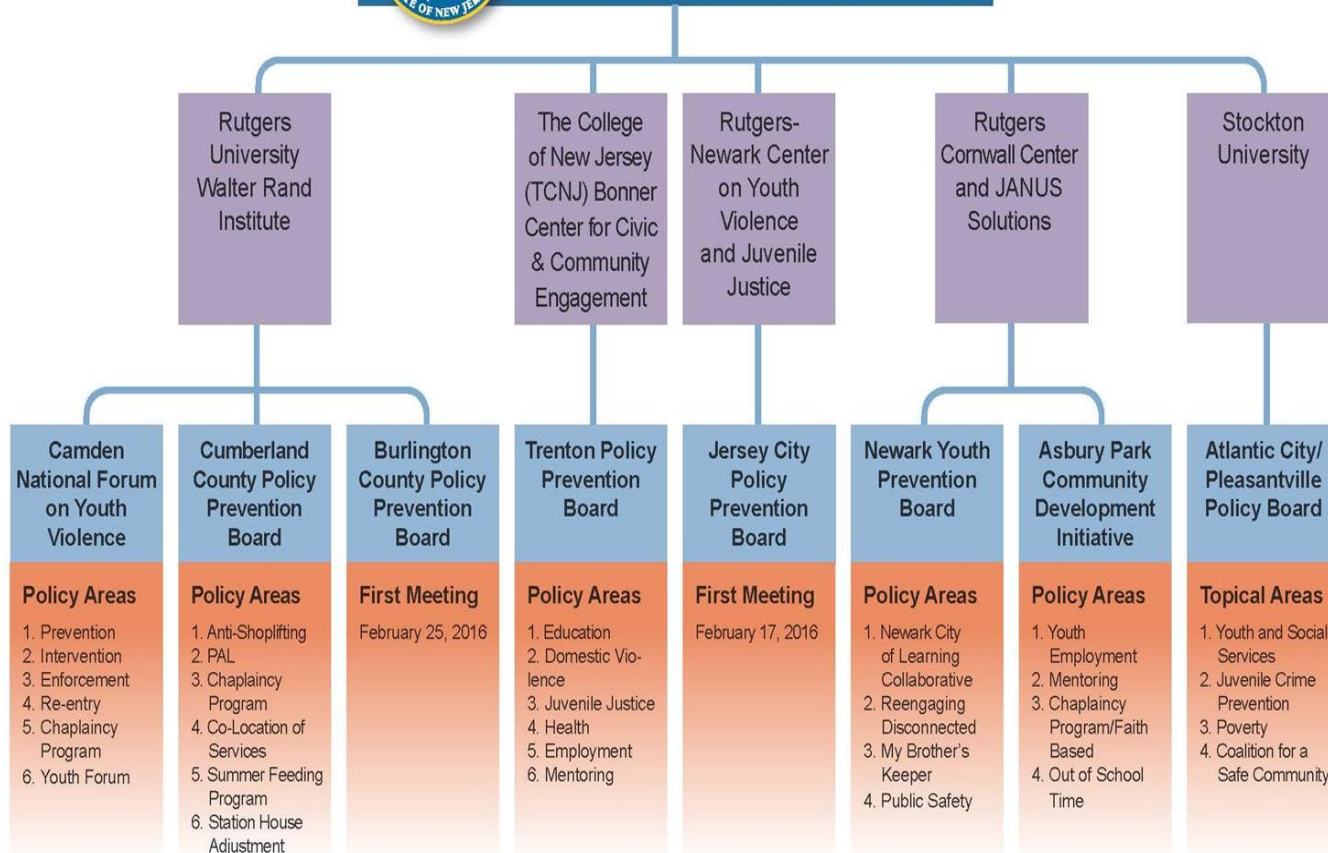
## Reviewing Jersey City Data

| Group                           | Jersey City | New Jersey |
|---------------------------------|-------------|------------|
| All students                    | 74%         | 89%        |
| White students                  | 81%         | 94%        |
| Black/African American students | 66%         | 81%        |
| Hispanic students               | 72%         | 83%        |
| Asian students                  | 91%         | 96%        |

# OAG Positive Youth Development & Prevention Organizational Structure



## New Jersey Office of the Attorney General



### Common Themes Across All of the Boards

Building Community-Police Partnerships, Community Mapping, Place Based and Strength-Based Development, Cross-Systems Communication, Violence Reduction and Safety, University Partnerships, Collaboration, Leveraging Resources, Mentoring, Community Engagement and Promise Neighborhoods/Zones, My Brother's Keeper, Chaplaincy, Collective Impact, Station House Adjustment

# Resource Map of Youth Services

**Job Training  
and Placement  
Services**

**Mentoring**

**Substance  
Abuse  
Prevention**

**Tutoring and  
College Prep**

**Services for  
Homeless  
Youth**

**Criminal  
Justice**

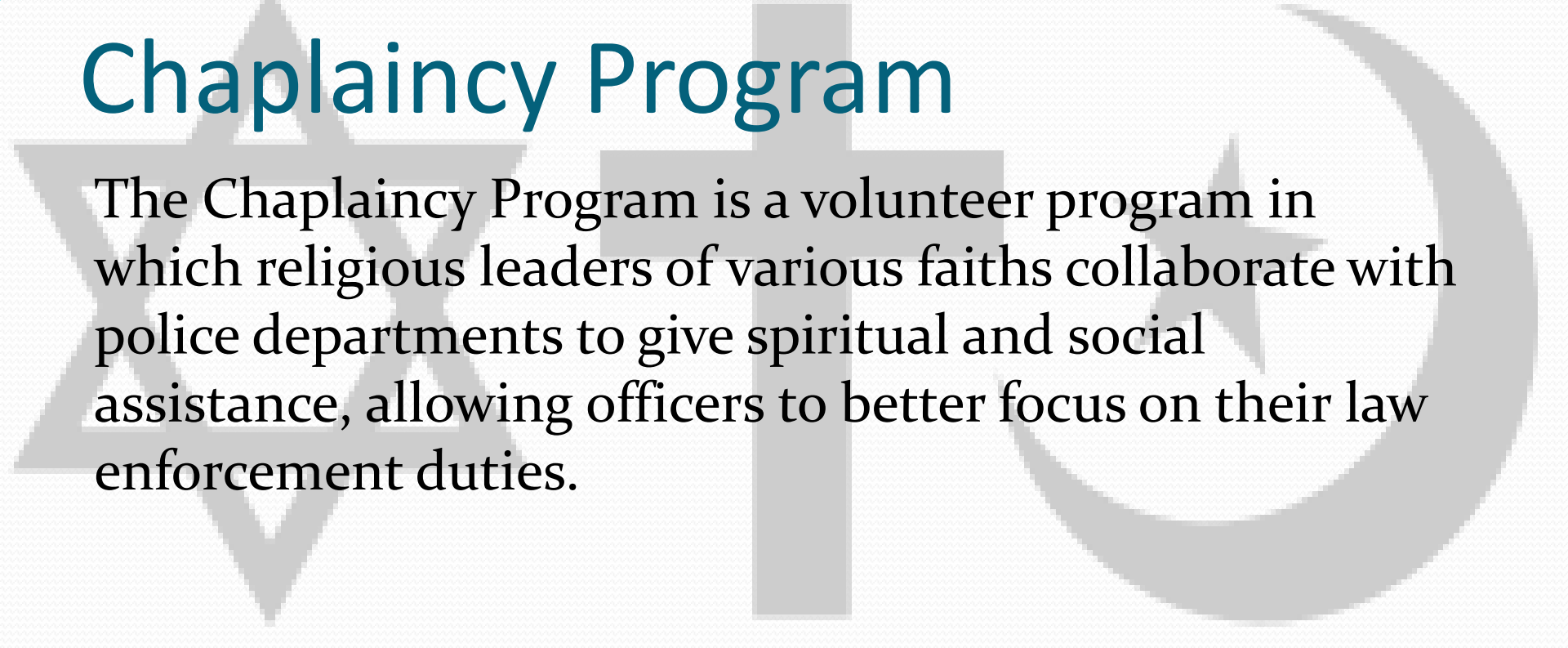
**Mental  
Health  
Counseling**

**Recreation  
and Athletic  
Programs**

**Services for  
LGBT Youth**



# Chaplaincy Program



The Chaplaincy Program is a volunteer program in which religious leaders of various faiths collaborate with police departments to give spiritual and social assistance, allowing officers to better focus on their law enforcement duties.





# STATION HOUSE ADJUST MENTS

Police officers divert first-time offenders who have committed minor offenses from formal court proceedings by using Chaplains. Then, Chaplains work with offenders on their community service obligation.

**SYSTEMWIDECHANGE**

**COLLABORATION**

**PARTNERS** **PARTNERSHIP** **STAKEHOLDERS**  
**STATEAGENCIES**  
**PRIVATESECTOR**

**CRIMINALJUSTICE**

**COOPERATION**

**GOVERNMENT**

**MAXIMUMIMPACT**

**SYSTEMS**

**SUSTAINABILITY**



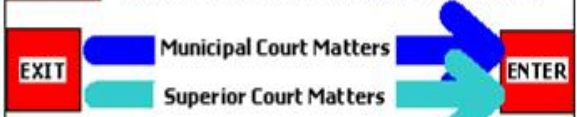
# FUGITIVE SAFE SURRENDER PROGRAM

## NEW JERSEY SOUTHERN REGION

Atlantic, Cape May,  
Cumberland, and Gloucester  
Counties



**GRACE ASSEMBLY  
OF GOD CHURCH**



Salvation Army  
(Refreshments)



### ATLANTIC CITY CONVENTION CENTER

Intake  
Waiting Area  
Social Services  
Volunteers (Questionnaire)  
Confirm ID and  
Warrant Status

- Law Enforcement (Administrative)
- Law Enforcement (ID/ Processing)
- NCIC
- NJKids
- LIVE SCAN
- ATS/ACS
- PROMIS
- GAVEL
- FAST SCAN

Courts

**SUPERIOR COURT**  
CRIMINAL  
FAMILY  
- Child Support  
- Juvenile  
- Division of Criminal Justice  
- Atlantic County Prosecutor's Office  
- Cape May County Prosecutor's Office  
- Cumberland County Prosecutor's Office  
- Gloucester County Prosecutor's Office  
- Office of the Public Defender

**MUNICIPAL COURT**  
DP OFFENSES  
TRAFFIC  
- Administrative (Superior & Municipal Courts)  
- Administrative Collections  
- Probation Department  
- Child Support Enforcement  
- NJ State Parole Board





**SYSTEMWIDECHANGE**

**COLLABORATION**

**PARTNERS** **PARTNERSHIP** **STAKEHOLDERS**  
**STATEAGENCIES**  
**PRIVATESECTOR**

**CRIMINALJUSTICE**

**COOPERATION**

**GOVERNMENT**

**MAXIMUMIMPACT**

**SYSTEMS**

**SUSTAINABILITY**



# McKinley School

As of 10/15/2010

