

Oakland County, Michigan

Summary Report: Felony and Misdemeanor Cases Circuit Court



Project Overview

The goal of the ECCM project is to discover, document, and disseminate effective criminal case management practices in state trial courts to help reduce delay and cost and improve the quality of justice. More than 90 courts are participating. Case-level information from the most recent 12-month period available was collected from each court for disposed felony and/or misdemeanor cases.

Case Types

Cases were classified into a set of case types determined by the most serious charge at filing. In order of severity, the case types are:

- Homicide (e.g., murder, manslaughter)
- Person offense (e.g., assault, robbery)
- Property offense (e.g., burglary, larceny)
- Drugs (e.g., manufacture, sale, use)
- Weapons (e.g., illegal possession)
- Driving While Intoxicated (e.g., DUI)
- Other motor vehicle (e.g., reckless driving)
- Legal process (e.g., bail, probation violation)
- Public order (e.g., disorderly conduct, vagrancy)
- Other felony/other misdemeanor

Case Counting Rules

A case is defined as a single defendant and all charges arising from a single incident. The data set includes a single record for each case. For cases involving multiple charges against a single defendant, the data was condensed to produce a single record based on the most serious charge at filing and disposition.

Active Time to Disposition

The recommended measure of case processing time excludes those time periods over the life of a case where the case is out of court control and no progress can be made (inactive time). For criminal cases this typically arises when a defendant fails to appear in court. When possible, we show active time to disposition, calculated by subtracting the inactive time from the total case processing time.

Oakland Court Description

Population of County (2015): 1,242,304

Population Rank: 33rd largest by population of the 3,142 U.S. counties

Type of Court & Data Available: Two-tier/GJ: felony data only

Judge Selection: Non-partisan election

Measuring Case Processing Time using the National Model Time Standards

Felonies

- 90% within 180 days
- 98% within 365 days

Misdemeanors

- 90% within 90 days
- 98% within 180 days

Time standards set expectations for timely case processing and provide a benchmark for assessing court performance. The **National Model Time Standards** (NCSC, 2011) for felony and misdemeanor cases are used here to provide time goals for resolving 90% and 98% of cases. In addition, the *mean* (average) and *median* (midpoint) days to disposition give insight into the more typical time taken to resolve cases. The *overall mean* for all ECCM sites is also included for comparison. When the % of cases within 90/180/365 days are the same, only one value is shown.

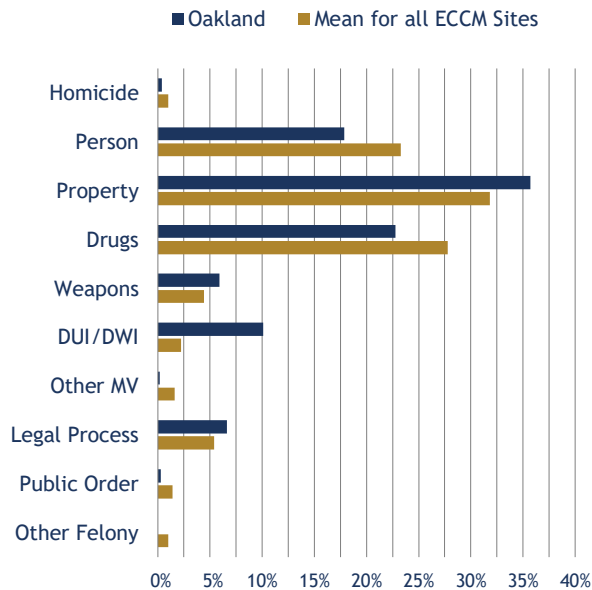
Oakland County, Michigan

Circuit Court - Felony Cases

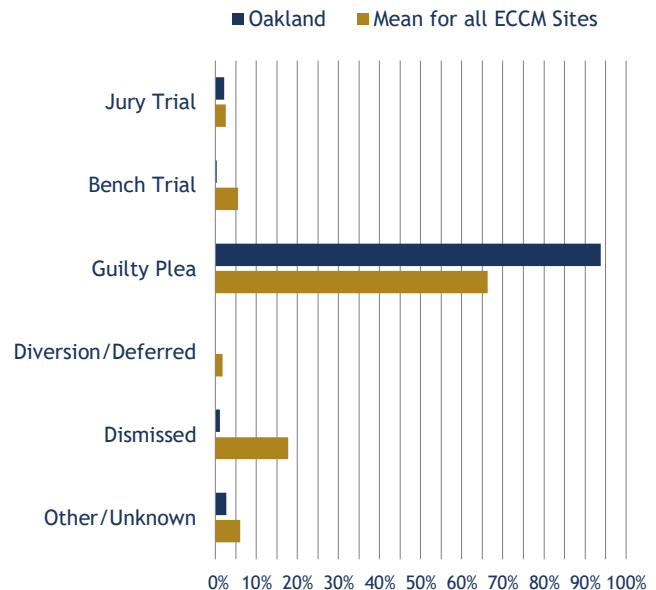


Total Felony Cases: 4,216

Caseload Composition



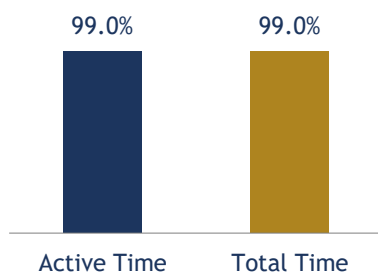
Manner of Disposition



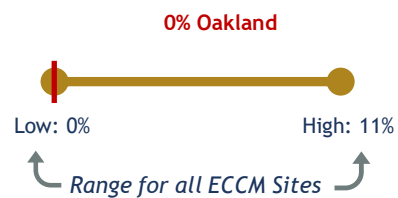
Active Time from Filing to Disposition All ECCM Sites in Michigan

| County/Site | Total Cases | % within 180 days | % within 365 days | Mean # of days | Median # of days |
|-------------------------|-------------|-------------------|-------------------|----------------|------------------|
| Kalamazoo | 1,588 | 93% | 97% | 69 | 34 |
| Oakland | 4,216 | 95% | 99% | 52 | 27 |
| Ottawa | 687 | 92% | 96% | 138 | 64 |
| Mean for All ECCM Sites | 3,676 | 63% | 86% | 213 | 135 |

% Disposed within 365 Days Active Time vs. Total Time



% Difference between Active and Total Time



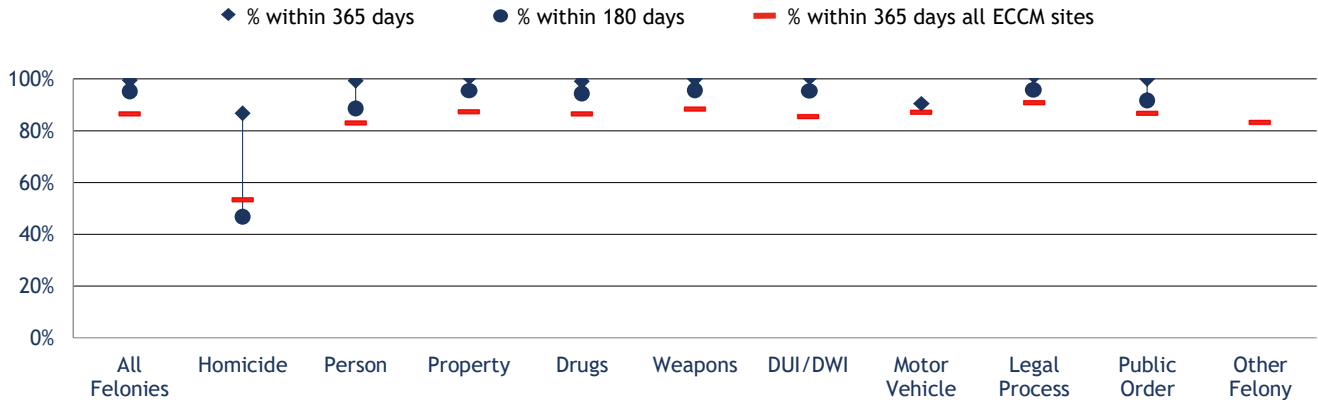
Oakland County, Michigan

Circuit Court - Felony Cases

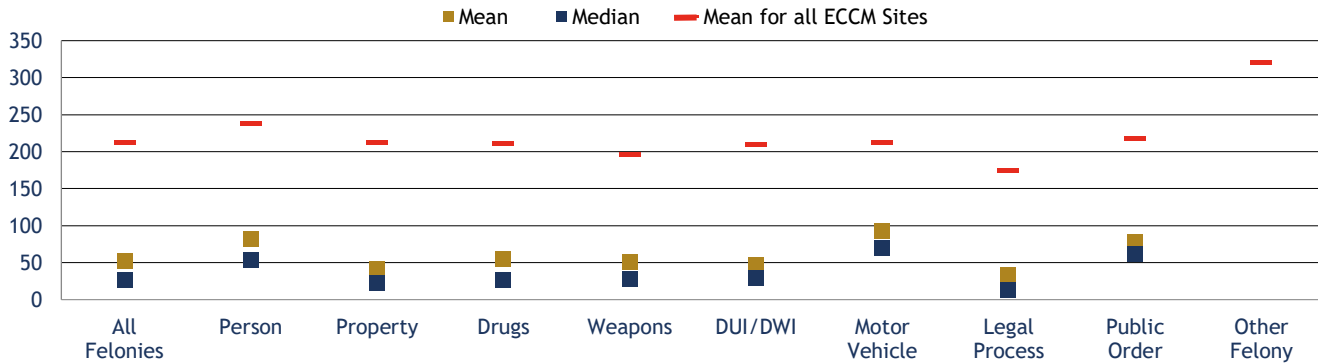


Total Felony Cases: 4,216

% Disposed Within 180 and 365 Days by Case Type (Active Time)

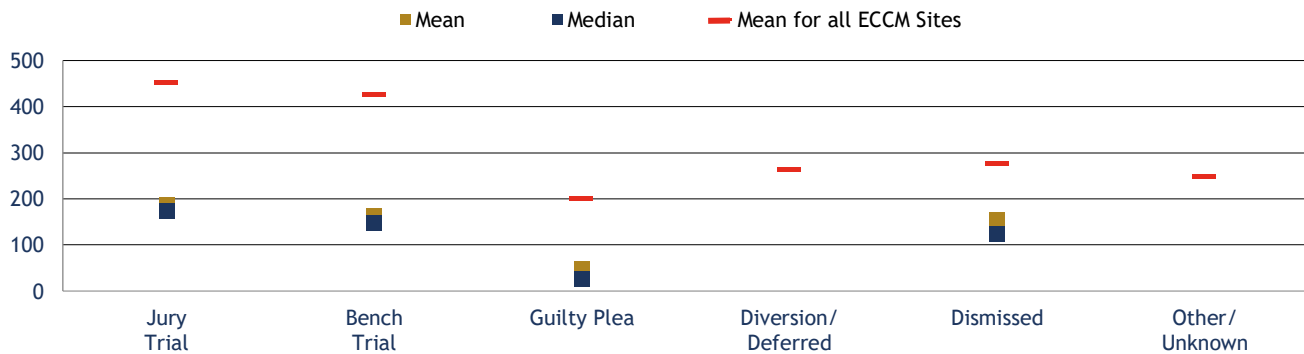


Disposed Cases: Mean and Median Days by Case Type (Active Time)



Note: Homicide mean = 205; median = 182. Mean for all ECCM sites = 468.

Mean and Median Days by Manner of Disposition (Active Time)

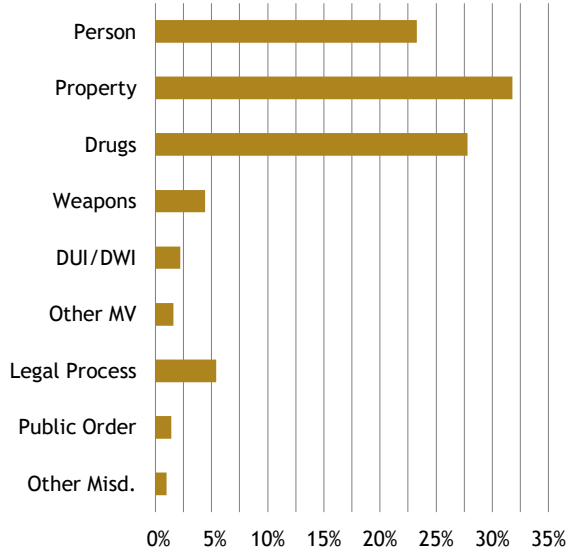


Aggregate Findings for All ECCM Sites

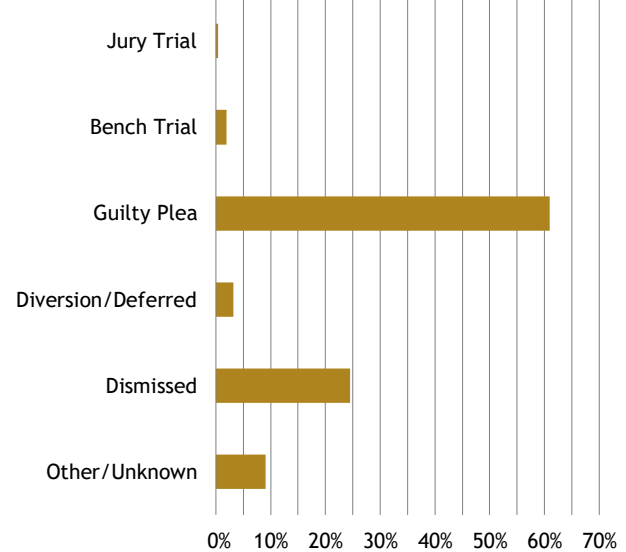
Misdemeanor Caseloads



Caseload Composition



Manner of Disposition



Active Time from Filing to Disposition

| County/Site | Average # of Cases per Site | % within 90 days | % within 180 days | Mean # of days | Median # of days |
|----------------|-----------------------------|------------------|-------------------|----------------|------------------|
| All ECCM Sites | 12,186 | 52% | 75% | 158 | 91 |

Percentage of Misdemeanor Cases Resolved Within:

| Case Type | 90 Days | 180 Days |
|-------------------------|------------|------------|
| Person | 43% | 70% |
| Property | 55% | 77% |
| Drugs | 51% | 76% |
| Weapons | 44% | 68% |
| DUI/DWI | 32% | 61% |
| Other MV | 52% | 74% |
| Legal Process | 51% | 73% |
| Public Order | 55% | 77% |
| Other Misd. | 43% | 66% |
| All Misdemeanors | 52% | 75% |

Number of Active Days from Filing to Disposition

| Manner of Disposition | Mean Days | Median Days |
|-------------------------|-----------|-------------|
| Jury Trial | 371 | 331 |
| Bench Trial | 295 | 273 |
| Guilty Plea | 143 | 104 |
| Diversion/Deferred Adj. | 178 | 147 |
| Dismissed | 231 | 117 |
| Other/Unknown | 158 | 75 |