



# UPSTREAM

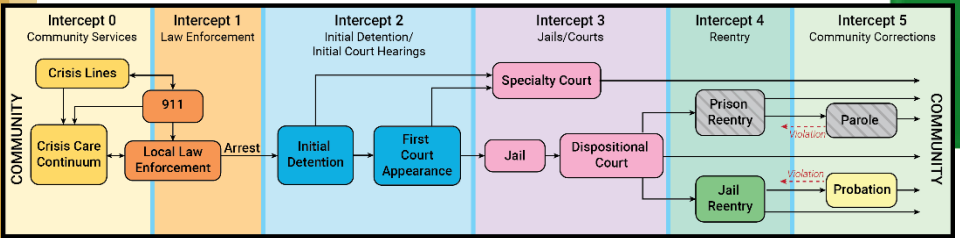
## CHILD WELFARE MAPPING IN MASSACHUSETTS

---

# Mapping Project Development



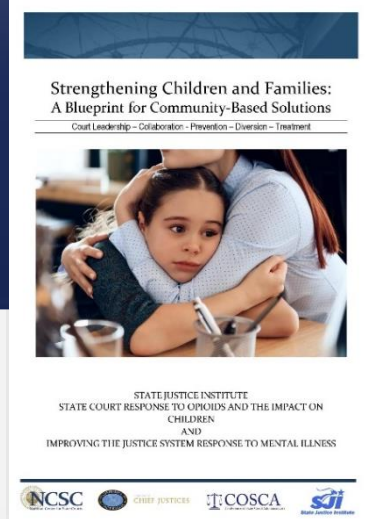
*Pathways Initiative*  
 Administrative  
 Office of the  
 Juvenile Court



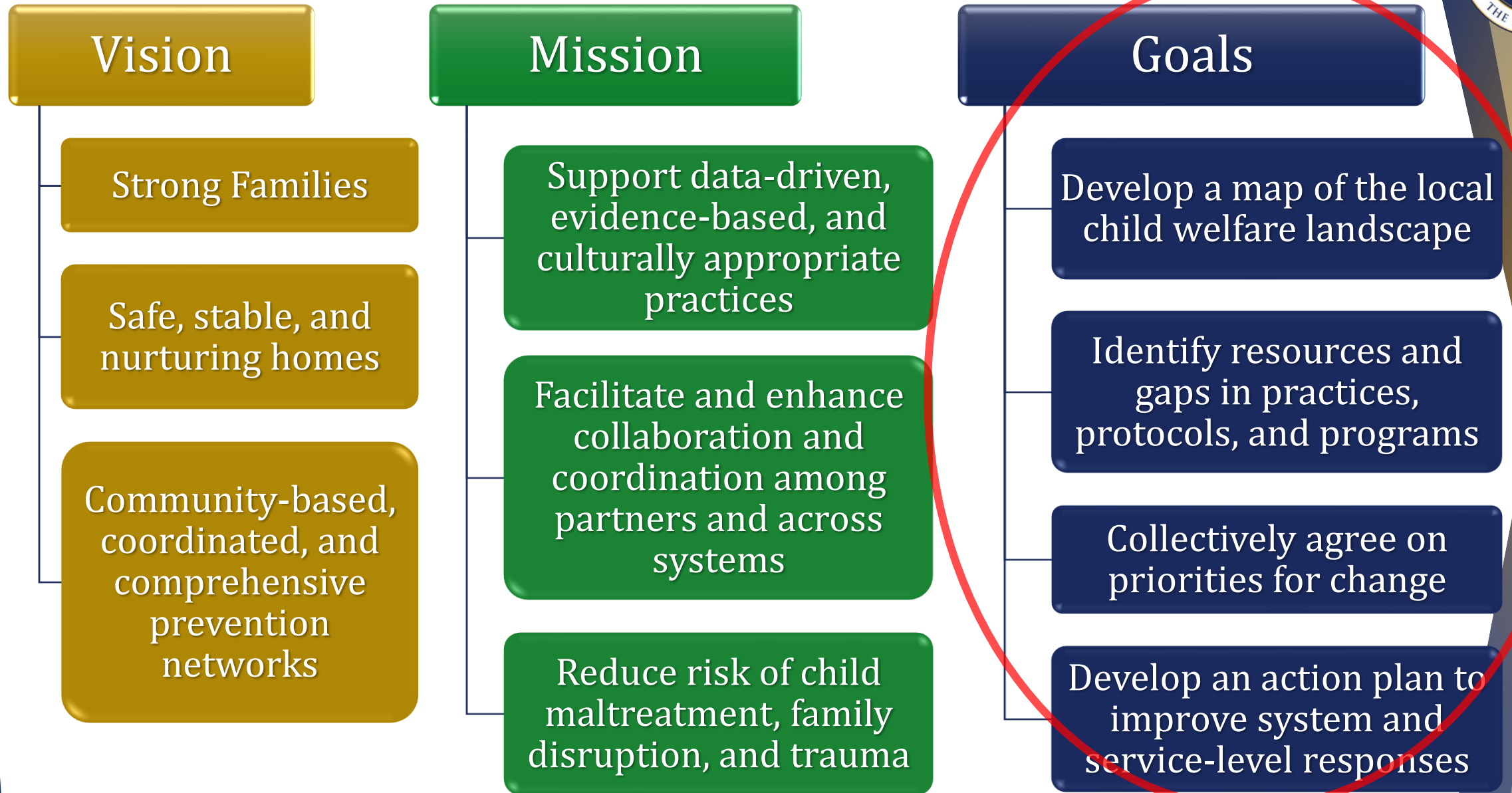
Massachusetts  
 Community Justice  
 Project  
 Executive Office of  
 the Trial Court

National Center for  
 State Courts  
 Casey Family  
 Programs

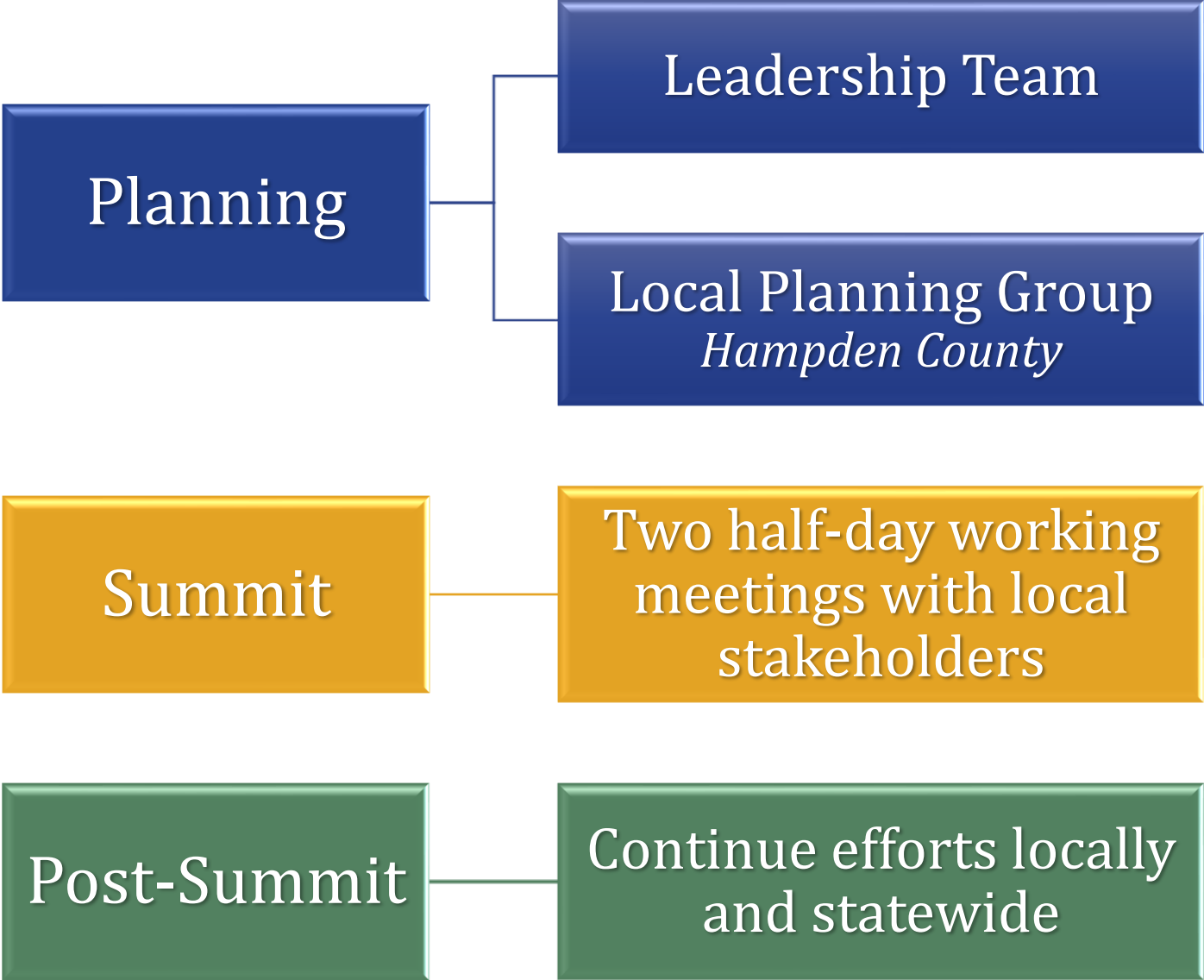
UPSTREAM  
 Child Welfare  
 Mapping



# Child Welfare Mapping in Massachusetts



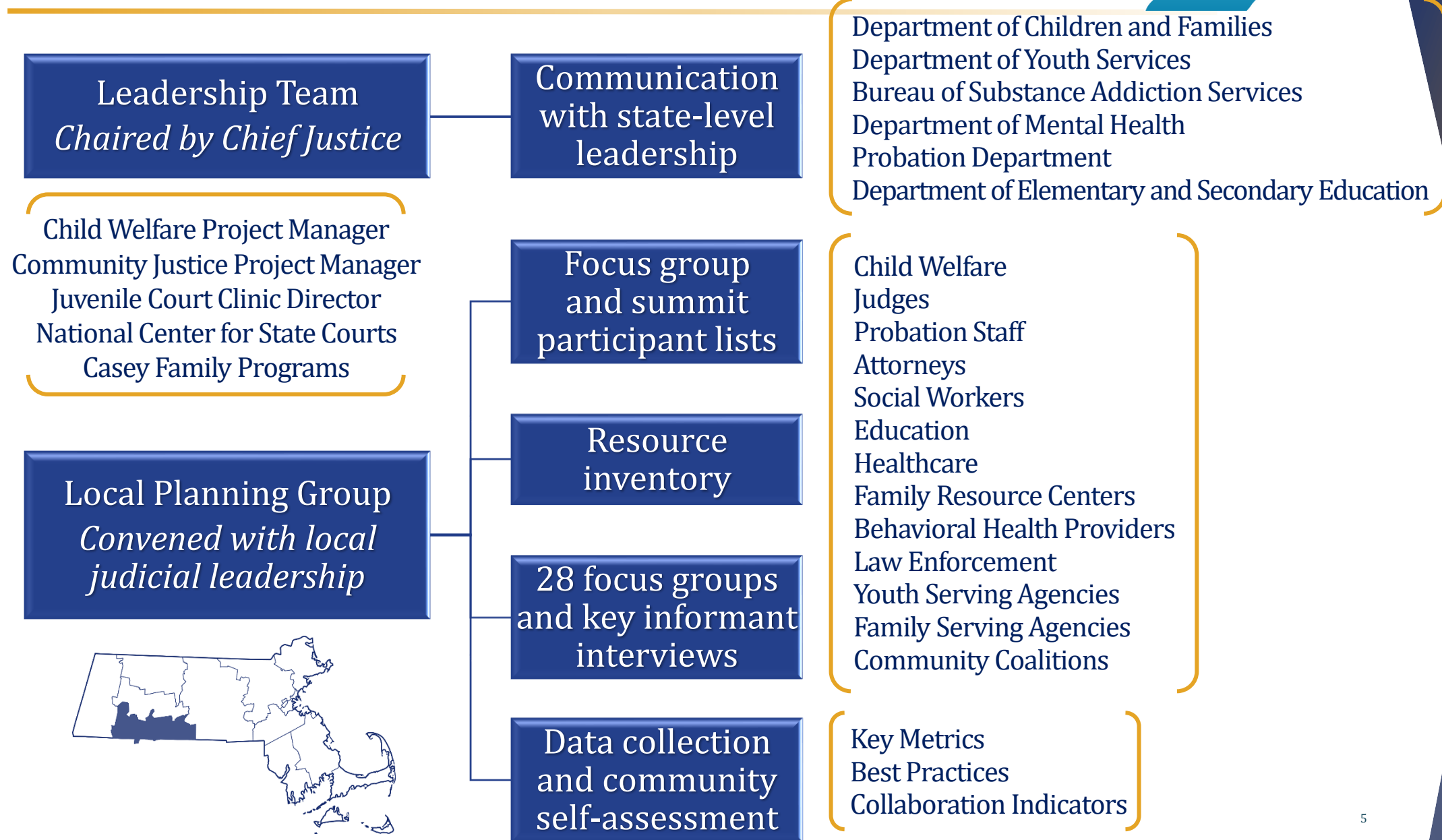
# Mapping Phases



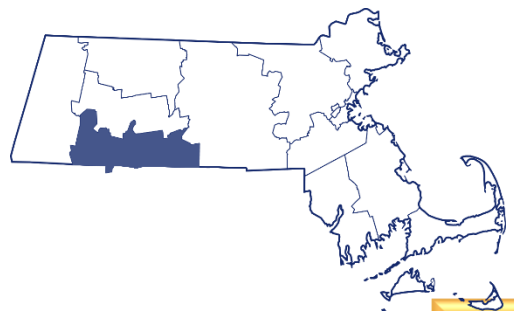
Trial Court Staffing  
*Child Welfare Project Manager*  
*Community Justice Project Manager*  
*Administrative Coordinator*



# Planning



# Summit



Day 1

Shared values

Review of Risk and Protective Factors

State and local data

Two half-day working meetings with 67 local stakeholders

Behavioral Health Treatment

Clerks

Probation

Child Welfare

Youth and Family Serving Agencies

Judges

State Agencies

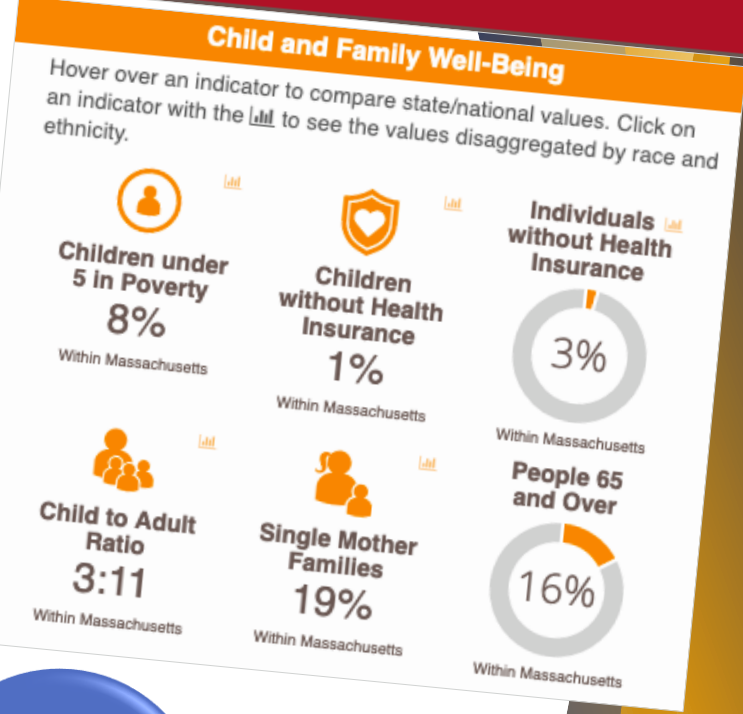
Education and Childcare

Healthcare

Attorneys and Justice Partners

**Community Opportunity Map**

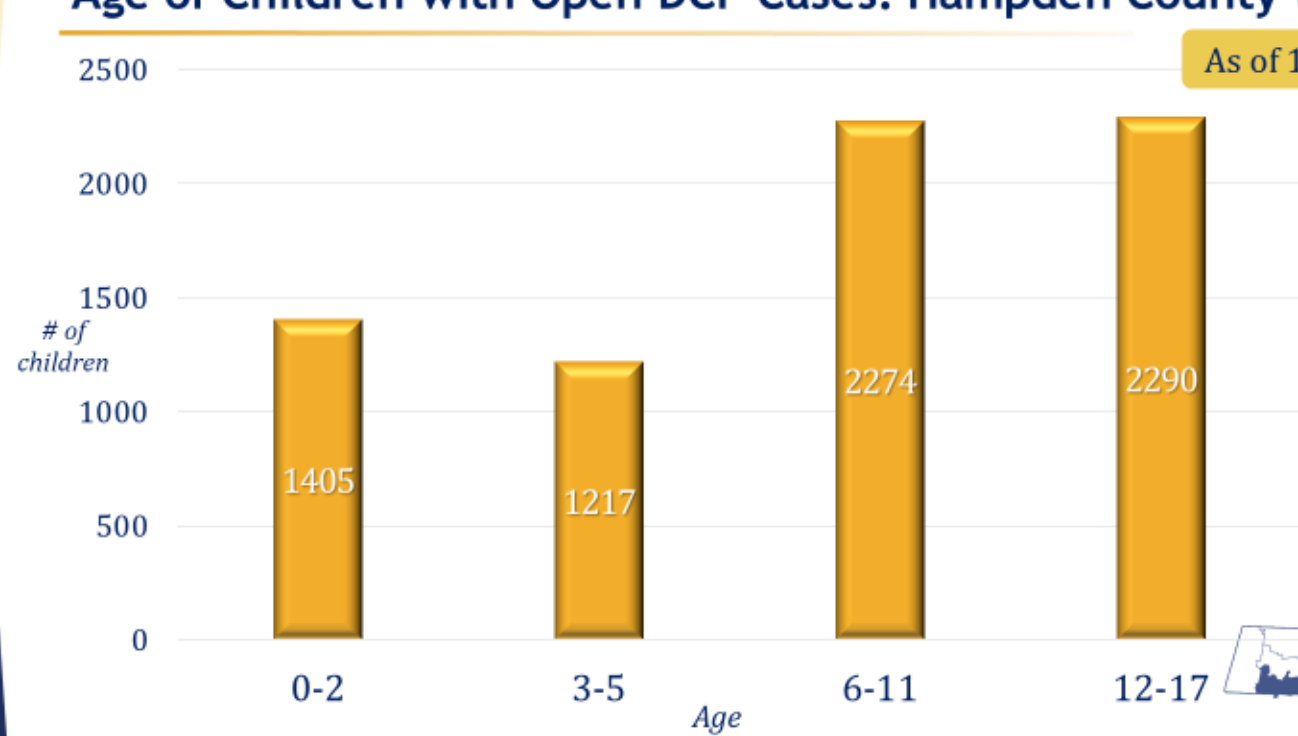
casey family programs. Local Data on Community Health to Support Safe Children and Strong Families



# Data

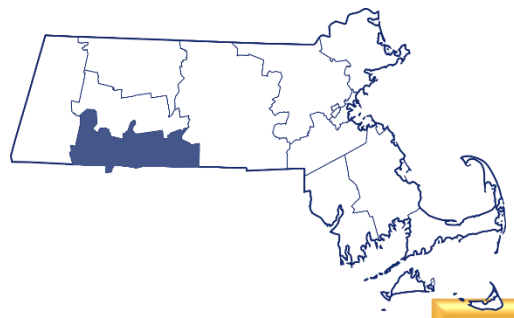
## Age of Children with Open DCF Cases: Hampden County

As of 12/31/20



Source: Department of Children and Families Quarter 2 Profile: 12/31/20

# Summit



Day 1

Shared values

Review of Risk and Protective Factors

State and local data

Child Welfare Landscape

Key Gaps from Focus Groups

Two half-day working meetings with 67 local stakeholders

Behavioral Health Treatment

Clerks

Probation

Child Welfare

Youth and Family Serving Agencies

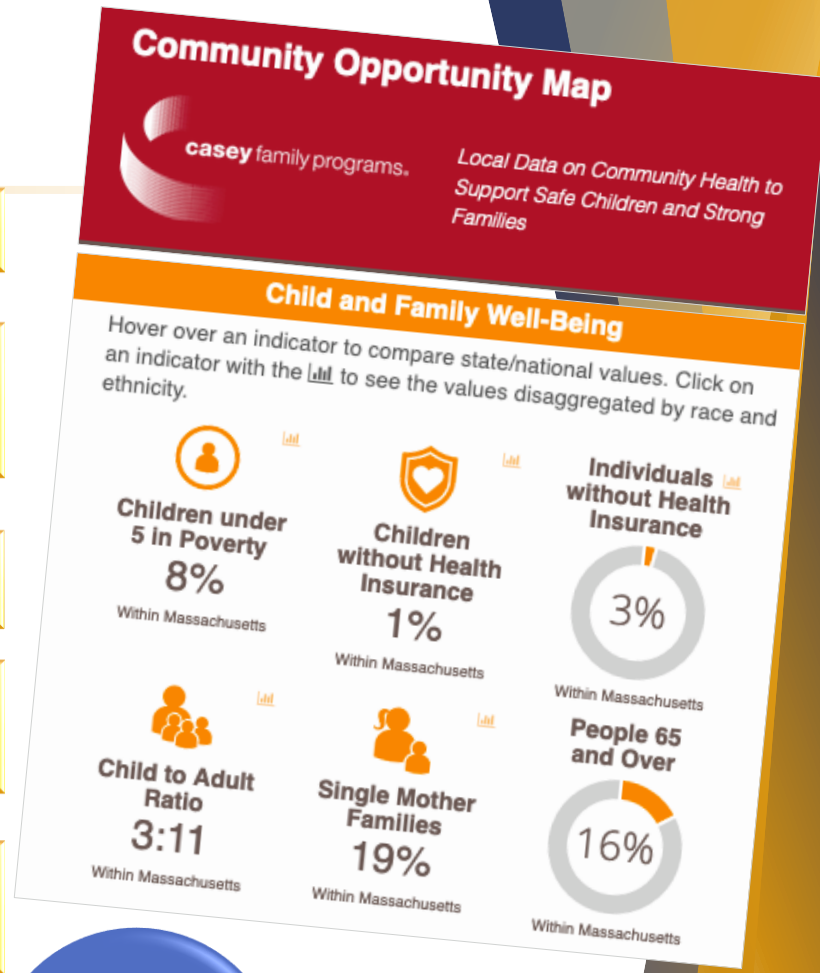
Judges

State Agencies

Education and Childcare

Healthcare

Attorneys and Justice Partners







# *CHILD WELFARE LANDSCAPE*

Framework for Resource and Cross-Systems Mapping

# Child Welfare Landscape

## Secondary Prevention

*Selective: At risk due to personal, family, or community factor(s)*

## Intervention

*Indicated: Displaying detectable signs or symptoms of child maltreatment behavior or are at very high risk*

## Crisis Intervention

## Child Welfare

*Treatment: Perpetrating child maltreatment; halt behavior and advance healing for victims*

## Court

## Aftercare

*Indicated: Detectable signs or at very high risk*

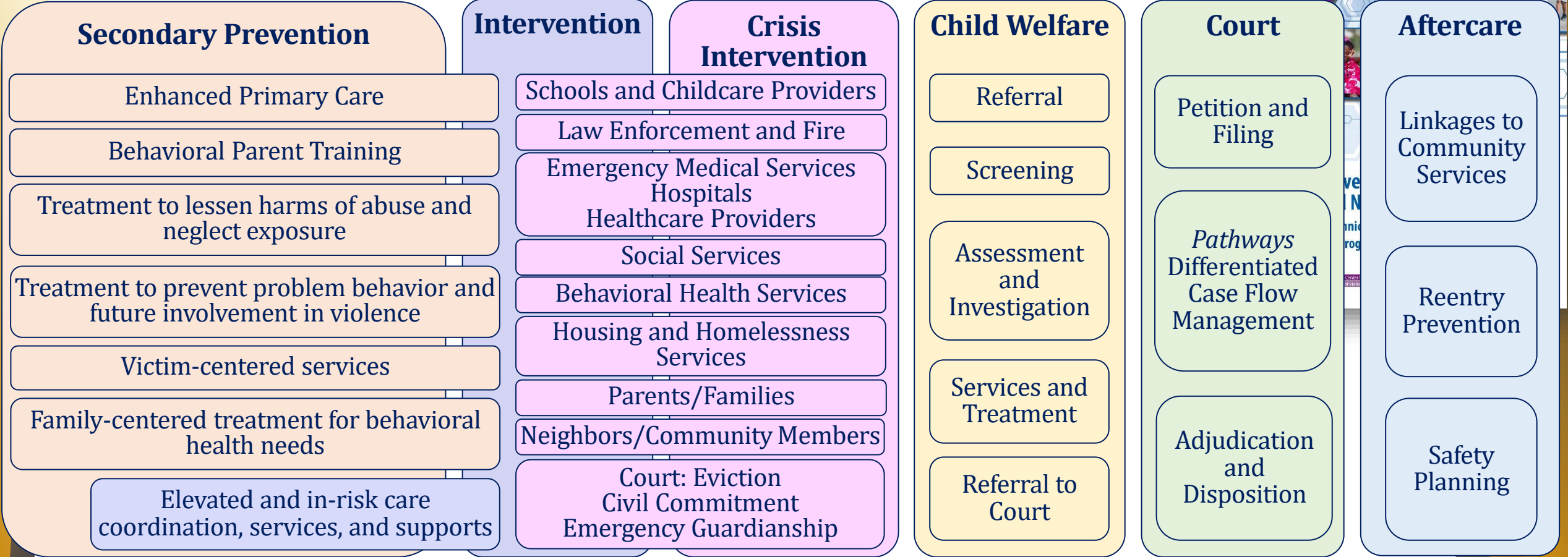
## Primary Prevention

*Universal: Entire population regardless of level of risk*

## Cross-Systems Collaboration

*Collective Impact*

# Child Welfare Landscape



## Primary Prevention



## Cross-Systems Collaboration





# Priorities for Change

Efficient and coordinated prevention and service network

Cross-systems care coordination and support for children and parents: pre-filing; after resolution; during and after reunification

Training and education across sectors: working with vulnerable children and families and related topics

Programs/processes for cross-sector and collaborative resolution of open DCF cases

Cross-systems coalition/working group focused on supporting children and families

Prosocial activities for youth, with opportunities for parent engagement; mentors with lived experience

Safe, stable, supportive, and affordable housing

Workforce issues among youth serving and behavioral health providers

Data system for data collection, analysis, and sharing; including data on race and ethnicity

Inclusion and integration of people with lived experience

Social isolation among vulnerable children and parents

Family-centered/two-generation programming

Transparency about child welfare practices

Support for parents in understanding child development and behavior

Support services and programs for fathers; and other caregivers

# Priorities for Change

Efficient and coordinated prevention and service network

Cross-systems care coordination and support for children and parents: pre-filing; after resolution; during and after reunification

Training and education across sectors: working with vulnerable children and families and related topics

Programs/processes for cross-sector and collaborative resolution of open DCF cases

Cross-systems coalition/working group focused on supporting children and families

Prosocial activities for youth, with opportunities for parent engagement; mentors with lived experience

Safe, stable, supportive, and affordable housing

Workforce issues among youth serving and behavioral health providers

Data system for data collection, analysis, and sharing; including data on race and ethnicity

Inclusion and integration of people with lived experience

Social isolation among vulnerable children and parents

Family-centered/two-generation programming

Transparency about child welfare practices

Support for parents in understanding child development and behavior

Support services and programs for fathers; and other caregivers

# Summit: Action Planning



**Priority:** *EFFICIENT AND COORDINATED PREVENTION AND SERVICE NETWORK*

<b>Objective</b> What do we want to achieve?	<b>Activities/ Tasks</b> What do we have to do to meet the objective?	<b>Resources</b> What resources are necessary to complete the activity? Who should be at the table? Is anyone already engaged in this activity?	<b>Timeframe</b> How much time is required for the activity? When can action begin on this activity?	<b>Barriers</b> Are there any potential barriers to consider?	<b>Responsibility</b> Who will take the lead?

# Post-Summit and Moving Forward



Compile report of findings and disseminate

Locally







**ECONOMIC SUPPORTS FOR FAMILIES**

- Financial Support and Food Insufficiency*
- [Department of Transitional Assistance: Transitional Aid to Families with Dependent Children; Emergency Aid to the Elderly, Disabled, and Children; Supplemental Nutrition Assistance Program](#)
- [State Supplement Program](#)
- [Women, Infants, and Children Nutrition Program](#)
- [Enlace de Familias \(food pantry\)](#)
- [Springfield Family Resource Center](#)
- [Food Bank of Western MA](#)
- Childcare Subsidies*
- [DCF Emergency Childcare Vouchers](#)
- Housing*
- [Holyoke Housing Authority](#)
- [Springfield Housing Authority](#)
- [Department of Housing and Community Development](#)
- [Wayfinders Residential Resource Center](#), [Community Development Corporation](#), [Friends of the Homeless](#), [One Holyoke](#)
- [DTA shelters](#), [RAFT](#), [Alianza](#)

- [Statewide Emergency Housing Assistance](#)
- [Department of Mental Health \(subsidies for adult housing and flexible funding\)](#)
- Transportation*
- [Pioneer Valley Transit Authority](#)
- [Registry of Motor Vehicles](#)
- [DCF Family Advocate through Community Connection Coalition](#)
- Education and Job Training*
- [Western Mass Network to End Homelessness](#)
- [Westover Job Corps](#)
- [Springfield Technical Community College](#)
- [Holyoke Community College](#)
- [Valley Opportunity Council](#)
- [One Can Help](#)

**HEALTHCARE**

- [Baystate Medical Center](#)
- [Holyoke Health Center](#)
- [Caring Health Center](#)
- [Baystate Family Advocacy Center](#)
- [MassHealth](#)

**CHILD WELFARE**

- [DCF Area Offices: Springfield, Holyoke, Van Wart](#)
- [DCF Legal: General Counsel, Regional Counsel, Deputy Regional Counsel](#)
- [DCF Clinical: Regional Substance Use Coordinators, Area Clinical Managers, Area Resource Coordinators, Western Regional Intensive Placement Coordinator, Clinicians, Case Managers](#)

**CHILDREN'S RESIDENTIAL**

- [Center for Human Development: Caring Together](#)
- [Key Program](#)
- [Allen Street](#)
- [Gandara](#)
- [Chicopee and Holyoke SSTAR](#)
- [The Children's Study Home](#)

**STATE AGENCIES**

- [Department of Children and Families](#)
- [Department of Public Health Substance Addiction Services](#)
- [Department of Mental Health](#)
- [Office of the Child Advocate](#)
- [Department of Youth Services](#)
- [Juvenile Detention Center](#)
- [Department of Elementary and Secondary Education](#)

**FAMILY CENTERED TREATMENT**

- [Sage House](#)
- [Institute for Health and Recovery Project, Family Recovery Project, Parent-Child Services, Project Square One: FIRST Steps Inside Out](#)
- [Behavioral Health Network](#)
- [Cutchins Program](#)
- [EMPOWER Program](#)
- [Center for Human Development](#)
- [Rivers](#)
- [Children's Behavioral Health](#)

**YOUTH CONNECTIONS**

- [Big Brothers Big Sisters Hampden County](#)
- [Boys and Girls Club of Greater Holyoke](#)
- [Boys and Girls Club of Greater Westfield](#)
- [YMCA: Springfield, Holyoke, Westfield](#)
- [YWCA Western Massachusetts](#)
- [Holyoke Youth Soccer](#)

**EARLY CHILDHOOD CARE AND EDUCATION**

- [Springfield Public Schools](#)
- [Holyoke Public Schools](#)
- [HCS Head Start](#)

**FAMILY DOMESTIC VIOLENCE**

- [Alianza \(Women's Shelter Compañeras\)](#)
- [DCF Regional DV Specialists](#)

**LAW ENFORCEMENT**

- [Holyoke Police: Holyoke Safe Neighborhood Program \(Family Resource Guide\)](#)
- [Springfield Police: Domestic Violence Advocate, Hub Table](#)
- [Hampden County Sheriff's Department: Springfield and Holyoke Neighborhood Watch, 6 Parent Engagement Coordinators, Youth Leadership Academy Summer Camp](#)

**BEHAVIORAL HEALTH TREATMENT**

- [Behavioral Health Network](#)
- [Center for Human Development](#)
- [Gandara](#)
- [Clinical & Support Options](#)
- [ServiceNet: Child and Adolescent](#)
- [Access to Recovery](#)

**COURT, COURT PARTNERS, AND COURT PROGRAMS**

- [Springfield Juvenile Court](#)
- [Holyoke Juvenile Court](#)
- [Pathways Initiative](#)
- [Hampden County Dually Involved Youth Program](#)
- [Hampden County DA's Office: Special Victims Unit, Trauma](#)
- [Hampden County JDAI](#)
- [Juvenile Court Clinic](#)
- [Committee for Public Counsel Services: Child and Adolescent](#)
- [Health Law Advocates: Mental Health Advocates](#)
- [Defense Counsel: Private Bar](#)

**FAMILY AND COMMUNITY RESOURCE CENTERS**

- [Enlace de Familias](#)
- [Springfield Family Resource Center](#)
- [Martin Luther King Jr. Family Services](#)
- [New North Citizens Council](#)

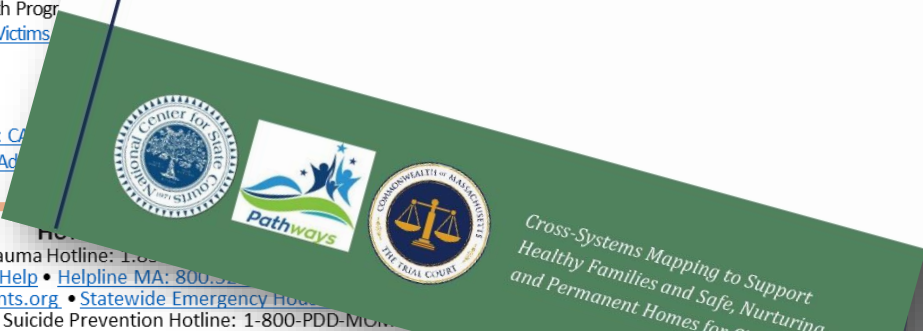
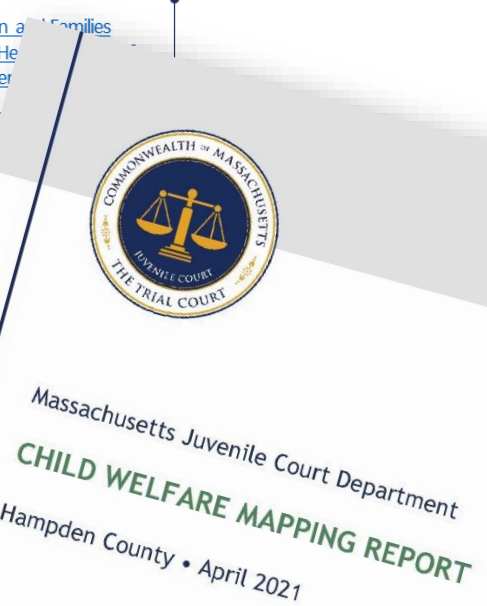
**PARENTING SKILLS TO PROMOTE HEALTHY CHILD DEVELOPMENT**

- [Holyoke Family Resource Center; Springfield Family Resource Center: Parenting Journey, Nurturing Fathers, Nurturing Families, virtual learning tutorials, Grandparents Raising Grandchildren, peer support](#)
- [Square One: Healthy Families, Parents as Teachers, Mothering from the Inside Out, FIRST Steps Together](#)
- [HCS Head Start: Holyoke Chicopee Family and Community Program, father engagement, family fun nights, cooking classes, parent volunteering opportunities](#)

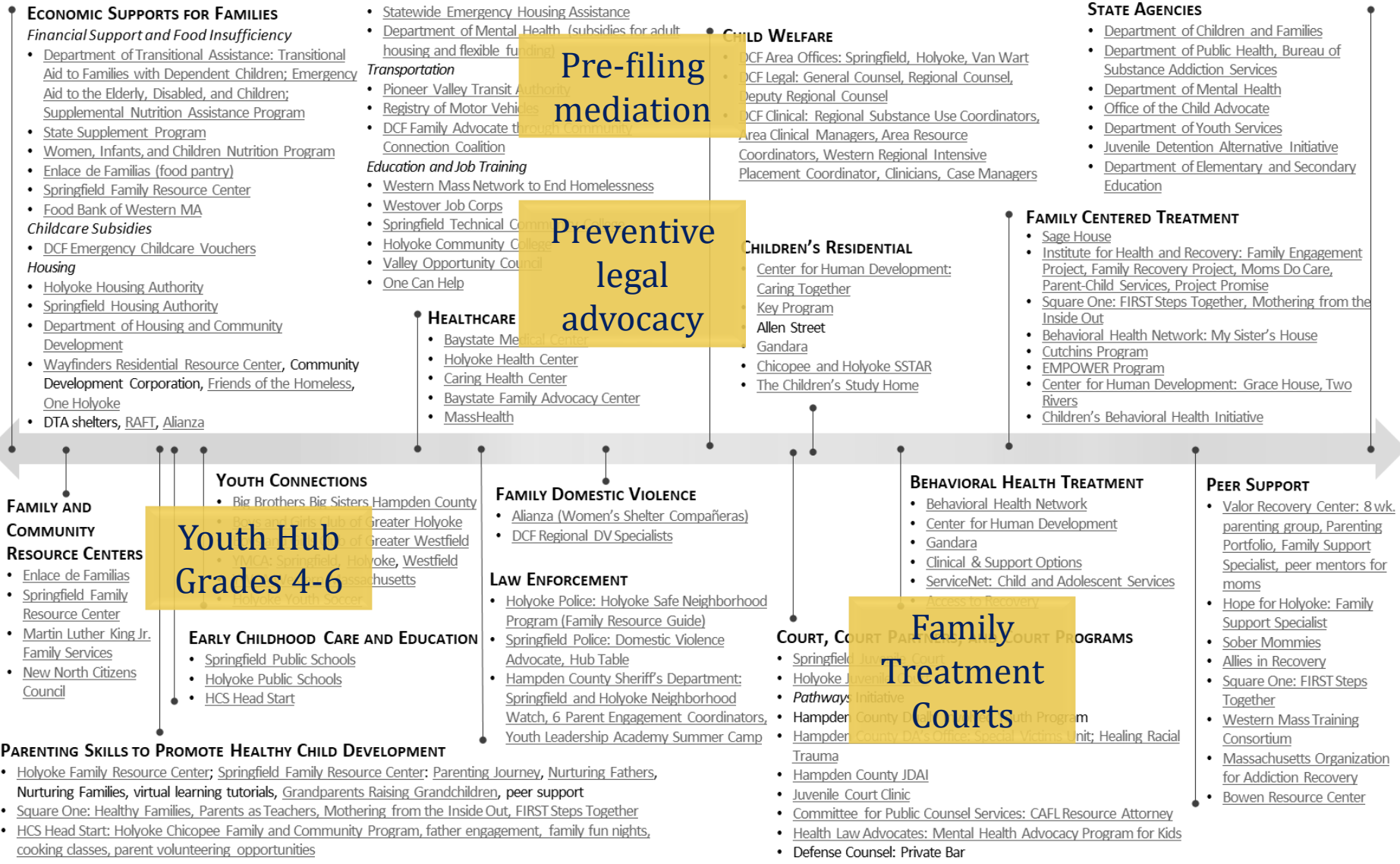
**COALITIONS/TASK FORCES**

- [JDAI](#) • [Holyoke Family Resource Center Advisory Board](#) • [City of Holyoke Food Access Committee](#) • [DCF Community Connection Coalition](#) • [Hampden County Family Recovery Council](#) • [Hampden County Perinatal Coalition](#) • [WMSAPA](#) • [Mandated Reporter Commission](#) • [DMH Law Enforcement and Mental Health Meeting in Northampton](#) • [Holyoke Safe Neighborhood Initiative](#) • [Pioneer Valley Restorative Justice for Youth](#) • [Hampden County Addiction Task Force](#)

- [413 Cares](#) • [MA Child Trauma Hotline: 1-800-352-8000](#) • [Look4Help](#) • [Helpline MA: 800-352-8000](#) • [ParentsHelpingParents.org](#) • [Statewide Emergency Housing](#) • [866.584.0653](#) • [Suicide Prevention Hotline: 1-800-PDD-MON](#)



PRIMARY PREVENTION    SECONDARY PREVENTION    INTERVENTION    CRISIS INTERVENTION    TREATMENT    AFTERCARE



Pre-filing mediation

Preventive legal advocacy

Youth Hub Grades 4-6

Family Treatment Courts

# Post-Summit and Moving Forward



Locally

Compile report and disseminate

Continue convening regular meetings to maintain momentum from summit and continue planning

Provide technical assistance

Secure resources to staff project

Implement mappings in counties across the state

Statewide





Thank  
you

**Marisa Hebble, MPH**  
Executive Office of the Trial Court  
[marisa.hebble@jud.state.ma.us](mailto:marisa.hebble@jud.state.ma.us)

