

Westmoreland County, Pennsylvania

Summary Report: Felony and Misdemeanor Cases

Court of Common Pleas and Magisterial District Court



Project Overview

The goal of the ECCM project is to discover, document, and disseminate effective criminal case management practices in state trial courts to help reduce delay and cost and improve the quality of justice. More than 90 courts are participating. Case-level information from the most recent 12-month period available was collected from each court for disposed felony and/or misdemeanor cases.

Case Types

Cases were classified into a set of case types determined by the most serious charge at filing.

In order of severity, the case types are:

- Homicide (e.g., murder, manslaughter)
- Person offense (e.g., assault, robbery)
- Property offense (e.g., burglary, larceny)
- Drugs (e.g., manufacture, sale, use)
- Weapons (e.g., illegal possession)
- Driving While Intoxicated (e.g., DUI)
- Other motor vehicle (e.g., reckless driving)
- Legal process (e.g., bail, probation violation)
- Public order (e.g., disorderly conduct, vagrancy)
- Other felony/other misdemeanor

Case Counting Rules

A case is defined as a single defendant and all charges arising from a single incident. The data set includes a single record for each case. For cases involving multiple charges against a single defendant, the data was condensed to produce a single record based on the most serious charge at filing and disposition.

Active Time to Disposition

The recommended measure of case processing time excludes those time periods over the life of a case where the case is out of court control and no progress can be made (inactive time). For criminal cases this typically arises when a defendant fails to appear in court. When possible, we show active time to disposition, calculated by subtracting the inactive time from the total case processing time.

Westmoreland Court Description

Population of County (2015): 357,956

Population Rank: 192nd largest by population of the 3,142 U.S. counties

Type of Court & Data Available: Two-tier/Felony and Misdemeanor data

Judge Selection: Partisan election (both tiers)

Measuring Case Processing Time using the National Model Time Standards

Felonies

90% within 180 days

98% within 365 days

Misdemeanors

90% within 90 days

98% within 180 days

Time standards set expectations for timely case processing and provide a benchmark for assessing court performance. The **National Model Time Standards** (NCSC, 2011) for felony and misdemeanor cases are used here to provide time goals for resolving 90% and 98% of cases. In addition, the *mean* (average) and *median* (midpoint) days to disposition give insight into the more typical time taken to resolve cases. The *overall mean* for all ECCM sites is also included for comparison. When the % of cases within 90/180/365 days are the same, only one value is shown.

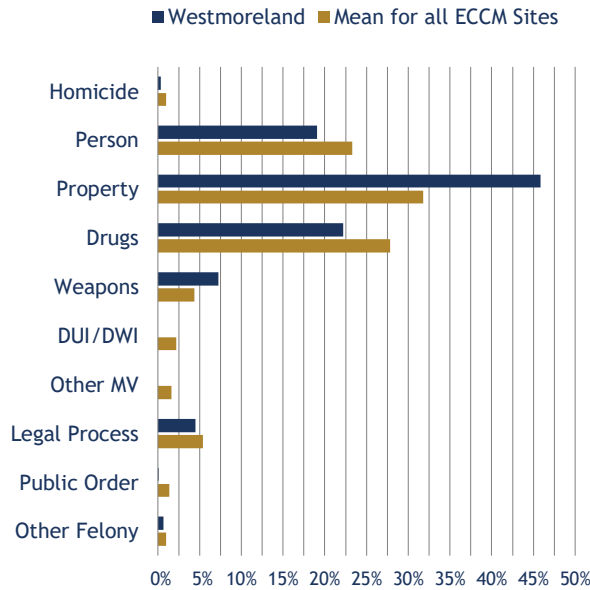
Westmoreland County, Pennsylvania

Court of Common Pleas - Felony Cases

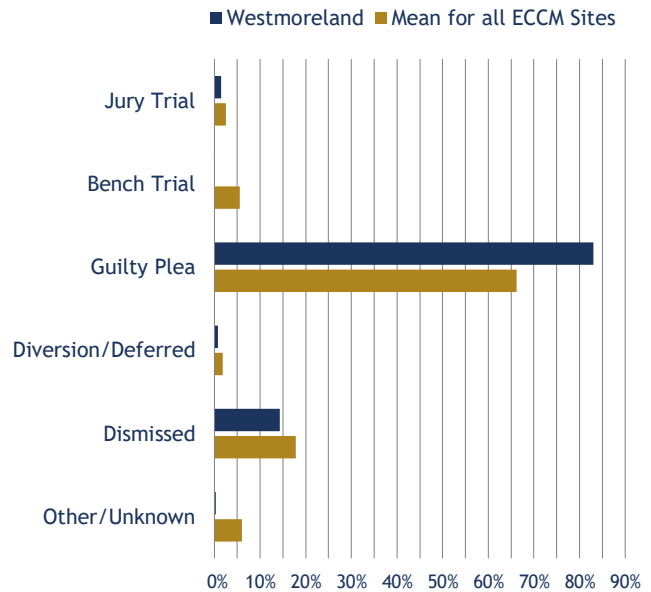


Total Felony Cases: 1,360

Caseload Composition



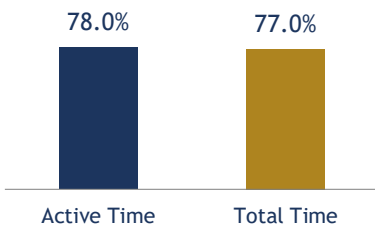
Manner of Disposition



Active Time from Filing to Disposition All ECCM Sites in Pennsylvania

County/Site	Total Cases	% within 180 days	% within 365 days	Mean # of days	Median # of days
Allegheny	9,339	50%	83%	238	181
Berks	1,814	43%	74%	297	209
Bucks	1,926	66%	92%	195	148
Chester	1,512	45%	87%	251	191
Dauphin	2,358	37%	73%	307	234
Delaware	1,907	63%	89%	223	140
Erie	1,184	55%	92%	199	170
Lancaster	1,627	45%	83%	262	194
Lehigh	1,271	56%	87%	237	161
Luzerne	1,858	30%	72%	385	243
Montgomery	2,954	37%	71%	358	240
Northampton	862	71%	93%	180	129
Philadelphia	15,124	49%	73%	302	184
Westmoreland	1,360	53%	78%	266	167
York	2,183	44%	81%	291	198
Mean for all ECCM Sites	3,676	63%	86%	213	135

% Disposed within 365 Days Active Time vs. Total Time



% Difference between Active and Total Time



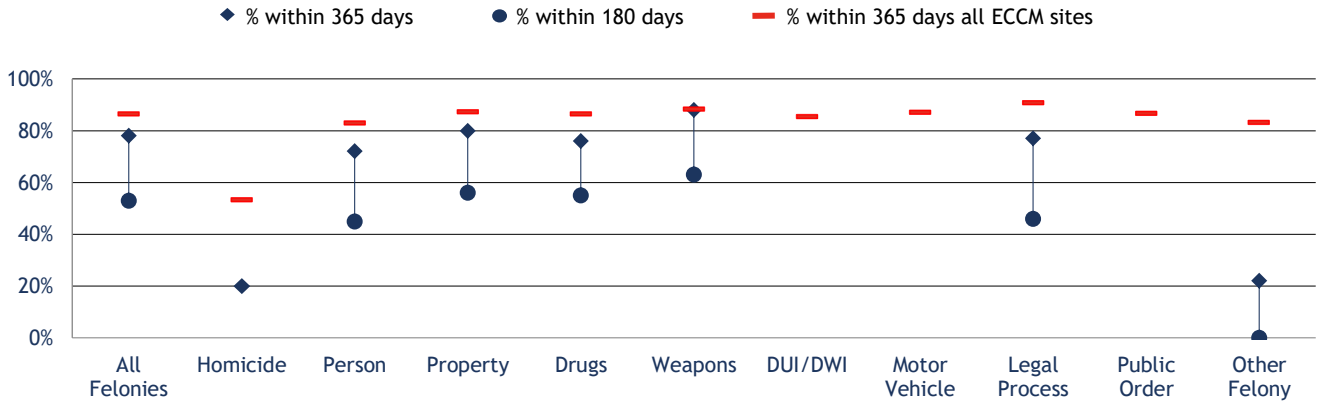
Westmoreland County, Pennsylvania

Court of Common Pleas - Felony Cases

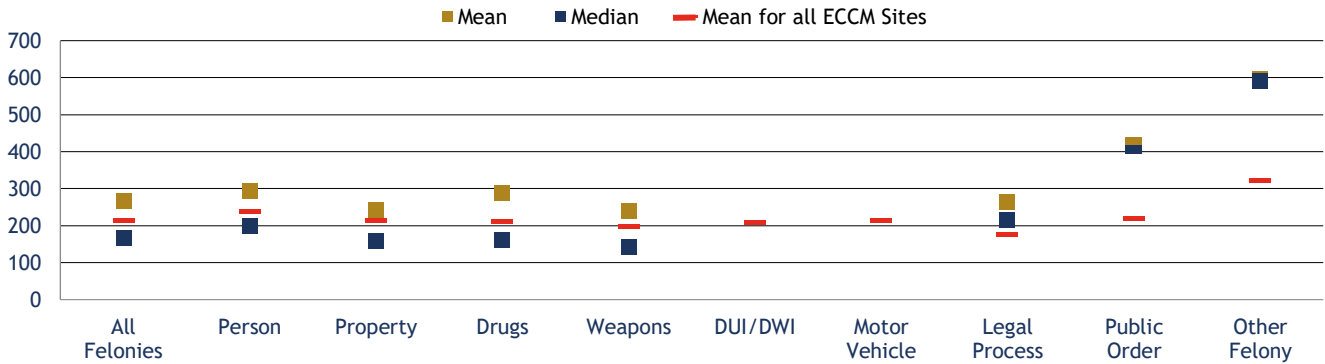


Total Felony Cases: 1,360

% Disposed Within 180 and 365 Days by Case Type (Active Time)

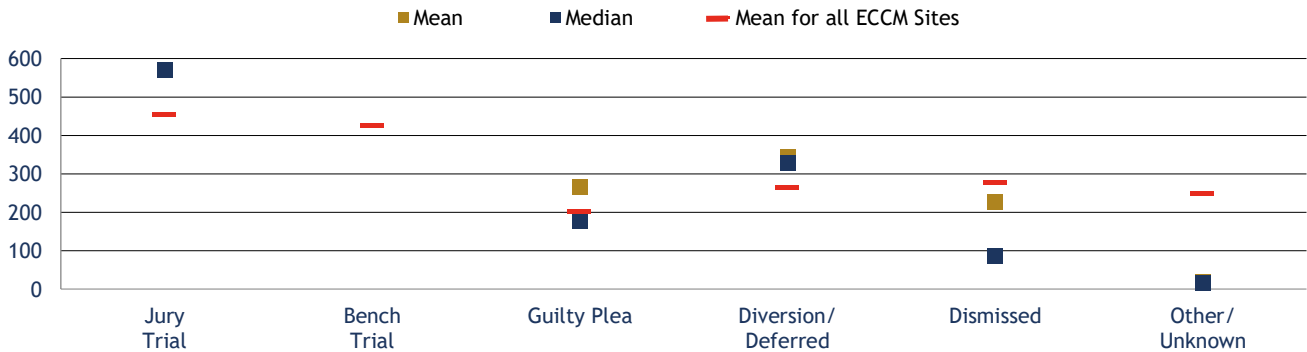


Disposed Cases: Mean and Median Days by Case Type (Active Time)



Note: Homicide mean = 575; median = 525. Mean for all ECCM sites = 468.

Mean and Median Days by Manner of Disposition (Active Time)



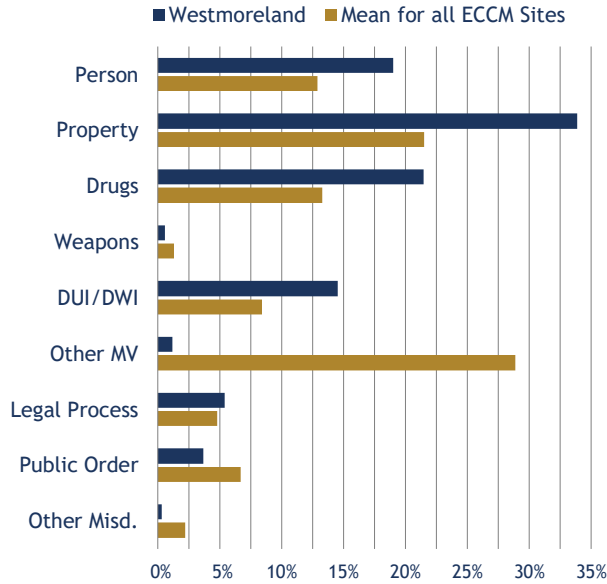
Westmoreland County, Pennsylvania

Magisterial District Court - Misdemeanor Cases

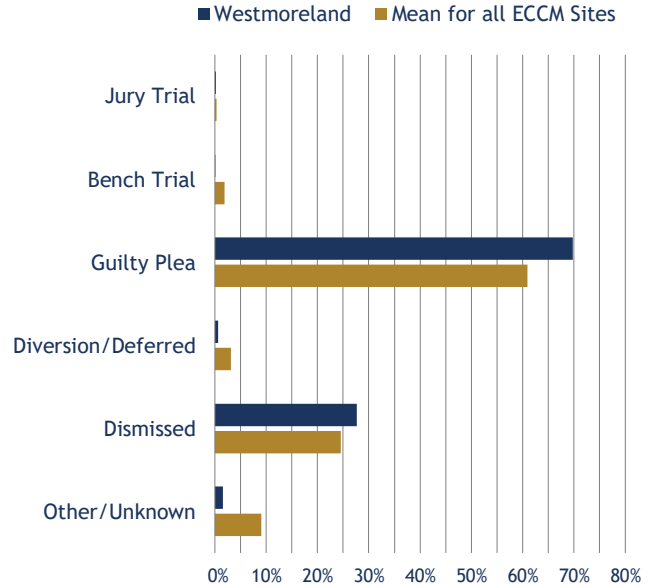


Total Misdemeanor Cases: 2,622

Caseload Composition



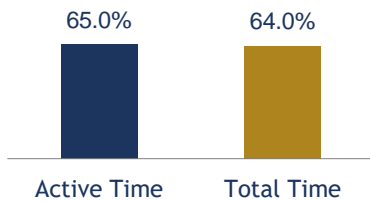
Manner of Disposition



Active Time from Filing to Disposition All ECCM Sites in Pennsylvania

County/Site	Total Cases	% within 90 days	% within 180 days	Mean # of days	Median # of days
Allegheny	19,045	42%	71%	161	112
Berks	2,995	31%	64%	198	131
Bucks	4,489	15%	73%	179	138
Chester	3,667	22%	60%	223	160
Dauphin	4,483	31%	55%	250	163
Delaware	3,489	33%	73%	211	121
Erie	2,424	39%	68%	166	121
Lancaster	3,025	29%	56%	246	160
Lehigh	2,875	32%	63%	252	136
Luzerne	4,049	39%	57%	373	150
Montgomery	6,411	18%	45%	371	204
Northampton	2,228	34%	74%	166	112
Philadelphia	12,704	49%	79%	145	92
Westmoreland	2,622	29%	65%	198	131
York	4,037	18%	61%	244	158
Mean for all ECCM Sites	12,186	52%	75%	158	91

% Disposed within 180 Days Active Time vs. Total Time



% Difference between Active and Total Time



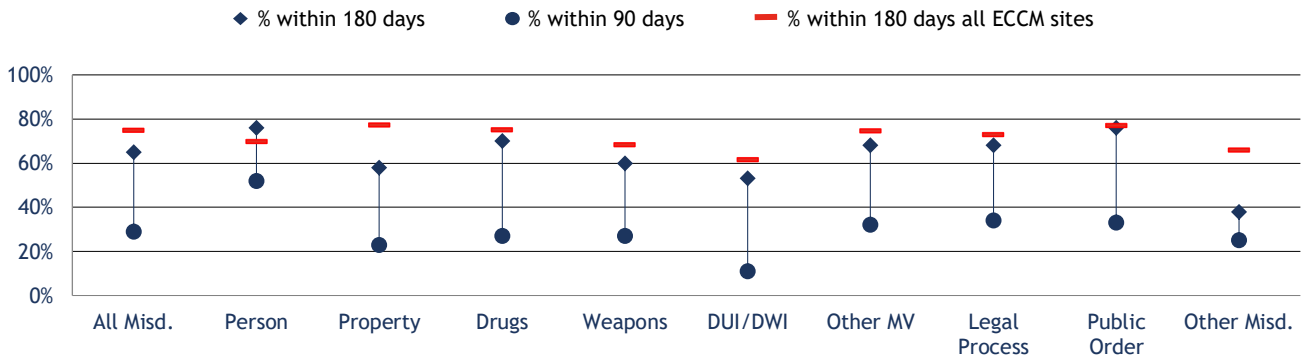
Westmoreland County, Pennsylvania

Magisterial District Court - Misdemeanor Cases

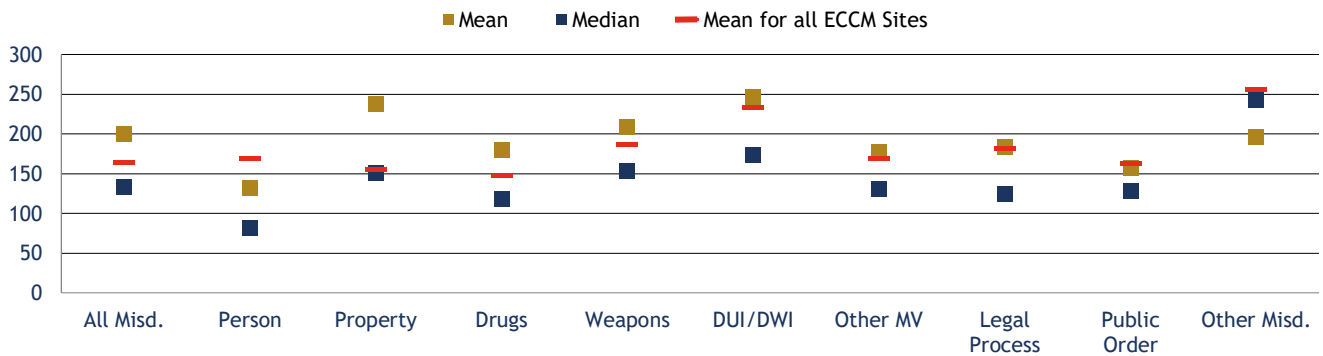


Total Misdemeanor Cases: 2,622

% Disposed Within 90 and 180 Days by Case Type (Active Time)



Disposed Cases: Mean and Median Days by Case Type (Active Time)



Mean and Median Days by Manner of Disposition (Active Time)

